

EQUIPMENT SPECIFICATION:

IRH-9 : GAS FIRED INFRARED HEATER, 80,000 BTU/HR HEATING CAPACITY 2-STAGE, 30" LENGTH, NATURAL GAS OPERATION C/W BURNER, RADIANT TUBE, CONTROLS, PARABOLIC ALUMINUM REFLECTORS, AND FACTORY VENT.
SUPERIOR RADIANT PRODUCTS, OR RE-VERBER-RAY.

PRICING NOTES:

18. CLEARANCE TO COMBUSTIBLE MATERIAL SHALL BE ACCORDING TO CAN/CSA B149.1-M95.
 19. PROVIDE PROTECTIVE LOCKABLE COVERS FOR ALL THERMOSTATS.
 20. ALLOW FOR QUICK SHIP DELIVERY COSTS AS WELL AS AFTER HOURS COST TO COMPLETE BY DATE INDICATED ON THE BIDDING REQUIREMENT ATTACHCH.
 21. COORDINATE WORK SCHEDULE WITH PHYSICAL PLANT, ALLOW FOR AFTER HOURS WORK AS REQUIRED.
 22. SHUT-DOWN PROCEDURES. COORDINATE WITH BOTH PHYSICAL PLANT.
 23. ROOFING CONTRACTOR SHALL BE APPROVED BY BC ROOFING CONTRACTORS ASSOCIATION.
 24. LABEL ALL ELECTRICAL WORK RELATED TO NEW IN HEATERS. LABELS TO BE PROVIDED
 25. IF APPLICABLE, REUSE EXISTING ELECTRICAL CIRCUIT AND BREAKER CURRENTLY SERVING EXISTING CERAMIC HEATERS.
- PRICING NOTES:**
- PROVIDE SEPARATE PRICING FOR INDEPENDENT ELECTRICAL CIRCUITS AND BREAKERS. 2 HEATERS PER BREAKER FOR A TOTAL OF 3 BREAKERS. PROVIDE EMIT SYSTEMS. FOR ALL NEW WIRING.

GENERAL NOTES:

1. REMOVE ALL EXISTING THERMOSTATS AND PROVIDE NEW 7-DAY (5-2) PROGRAMMABLE, 2-STAGE THERMOSTATS WITH NON-VOLATILE MEMORY AT LOCATIONS SHOWN ON THE DRAWINGS.

2. THERMOSTATS ARE SHOWN AT DESIRED FINAL LOCATIONS.
3. CONTRACTOR TO ENSURE THAT INFEREDED HEATERS SERVING A PARTICULAR ZONE, ARE CONTROLLED BY THE THERMOSTAT IN THAT ZONE.
4. COORDINATE THERMOSTAT LOCATIONS WITH BGT PHYSICAL PLANT TO AVOID CONFLICT OR IN ACCESS OF DIRECT SUNLIGHT. DO NOT LOCATE NEAR HEAT EMITTING DEVICES

5. PROVIDE SEISMIC RESTRAINTS FOR ALL NEW EQUIPMENT (INFRARED HEATERS, PIPING).
6. FIRE STOP ALL PIPING PENETRATIONS THROUGH RATED FLOORS AND WALLS.
PROVIDE WEATHER PROOFING FOR ALL ROOF PENETRATIONS.

7. CONTRACTOR TO COORDINATE INFRARED HEATERS LOCATION WITH MECHANICAL DUCTING AND STRUCTURAL ELEMENTS IN CEILING AREA.

- IT 2' ABOVE THE ROOF c/w RAIN CAP.
9. PROVIDE 4" (AS INDICATED) COMBUSTION AIR DUCT INTAKE FOR EACH INFRARED HEATER AND EXTEND IT AT LEAST 2' ABOVE THE ROOF c/w PROPER HOOD.

10. ALLOW FOR REMOVAL AND DISPOSAL OF REDUNDANT GAS PIPING, HANGERS AND ACCESSORIES RELATED TO OLD RADIANT PANELS, AS SHOWN OR WHERE APPLICABLE. REMOVE ALL RADIANT PANELS AND HAND OVER TO BCI PHYSICAL PLANT. REUSE GAS PIPING IN GOOD CONDITION.

11. ALLOW FOR CRANE AND ALL NECESSARY HOISTING EQUIPMENT TO REMOVE ALL EXISTING RADIANT PANELS AND REDUNDANT GAS PIPING AND TO INSTALL NEW INFRARED HEATERS AND GAS PIPING. LABEL ALL NEW GAS PIPING.
12. PROVIDE NEW GAS PIPING WITH NECESSARY SHUT OFF VALVES AND ACCESSORIES

- FOR NEW INFRARED HEATERS AS REQUIRED.
13. CHECK GAS PRESSURE REQUIREMENT FOR INFRARED HEATERS WITH SUPPLIER AND ADJUST MAIN PRESSURE REGULATING VALVES APPROPRIATELY.

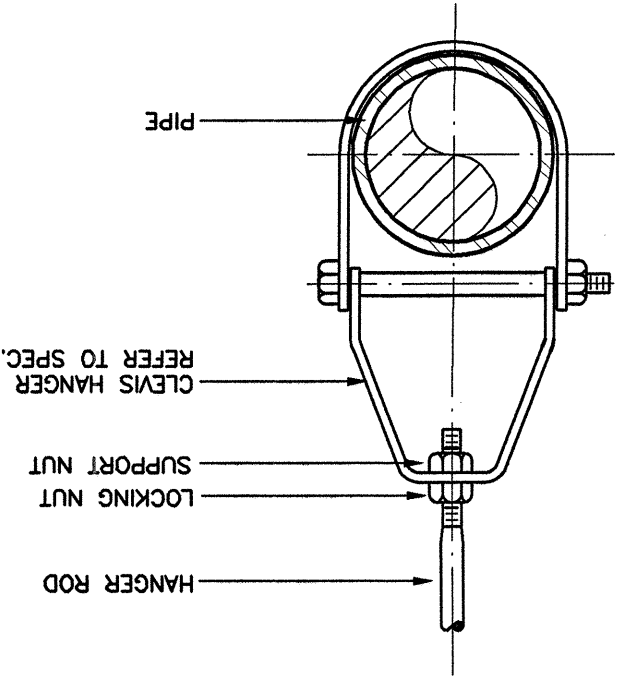
14. COORDINATE SPACE.
15. SITE VISIT MANDATORY PRIOR TO SUBMITTING BID. ENSURE INFRARED HEATERS AND FLUE / VENT DUCTS WILL NOT INTERFERE WITH ANY STRUCTURAL ELEMENTS. ALLOW

16. ALLOW FOR RE/RE OF T-BAR AND CEILING TILES WHERE INFRARED HEATERS ARE FOR X-RAYING AND CORING AS REQUIRED.
TO BE INSTALLED UNDERNEATH FALSE CEILING, INSULATE COMBUSTION DUCT PORTIONS INSIDE CEILING SPACE WHERE A FALSE CEILING EXISTS.

DETAIL 1

SCALE: N.T.S.

HANGER DETAIL FOR PIPING



DETAIL 2

SCALE: N.T.S.

