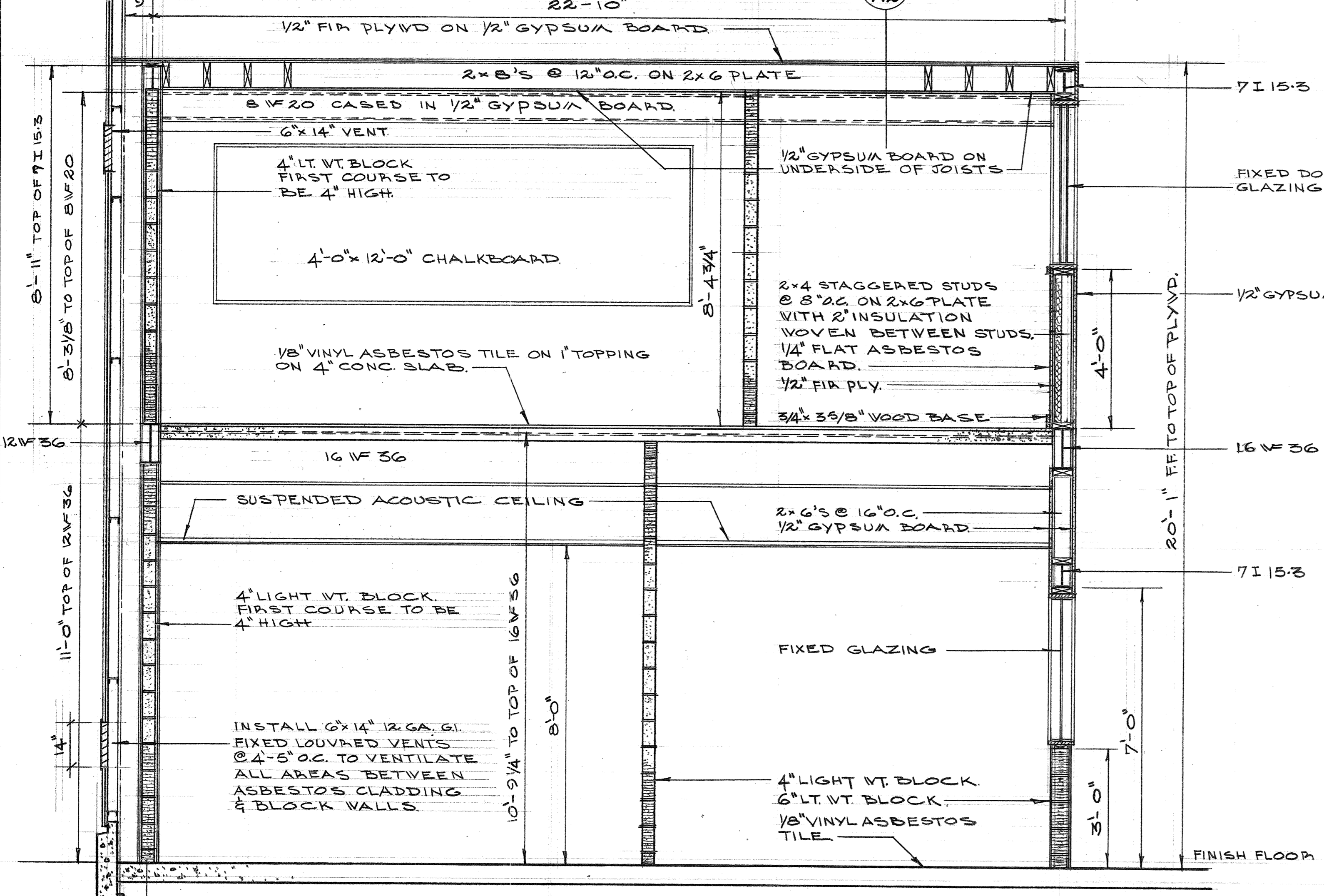
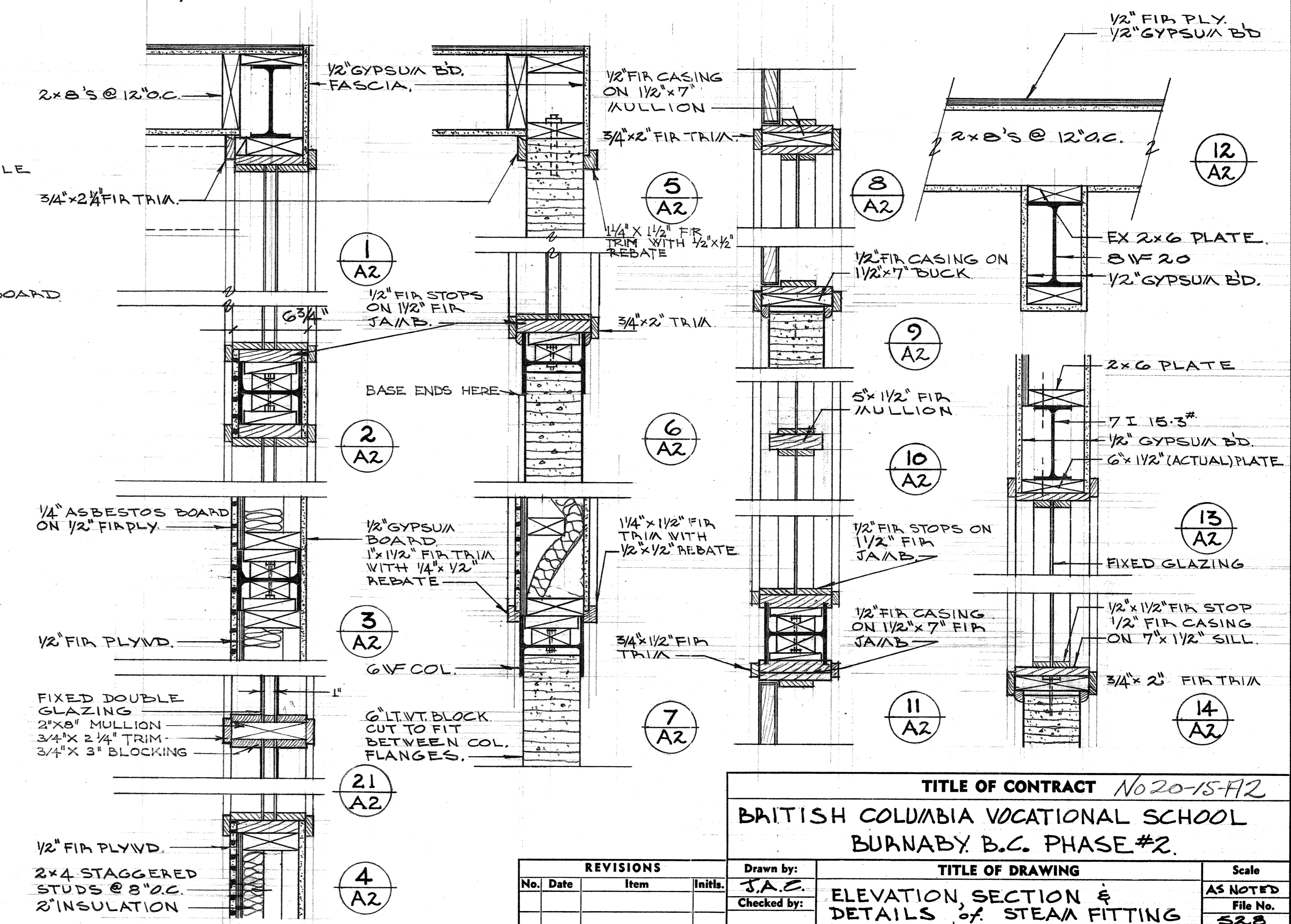


INTERIOR SOUTH ELEVATION
SCALE 1/4" = 1'-0"



NOTE
ALL WOOD PLATES & BLOCKING WHERE SHOWN FIXED TO STEEL MEMBERS SHALL BE FIXED TO SAME WITH 1/2\"/>



SECTION A-AZ
SCALE 1/2" = 1'-0"

39652

SCALE OF DETAILS 1/2" = 1'-0"

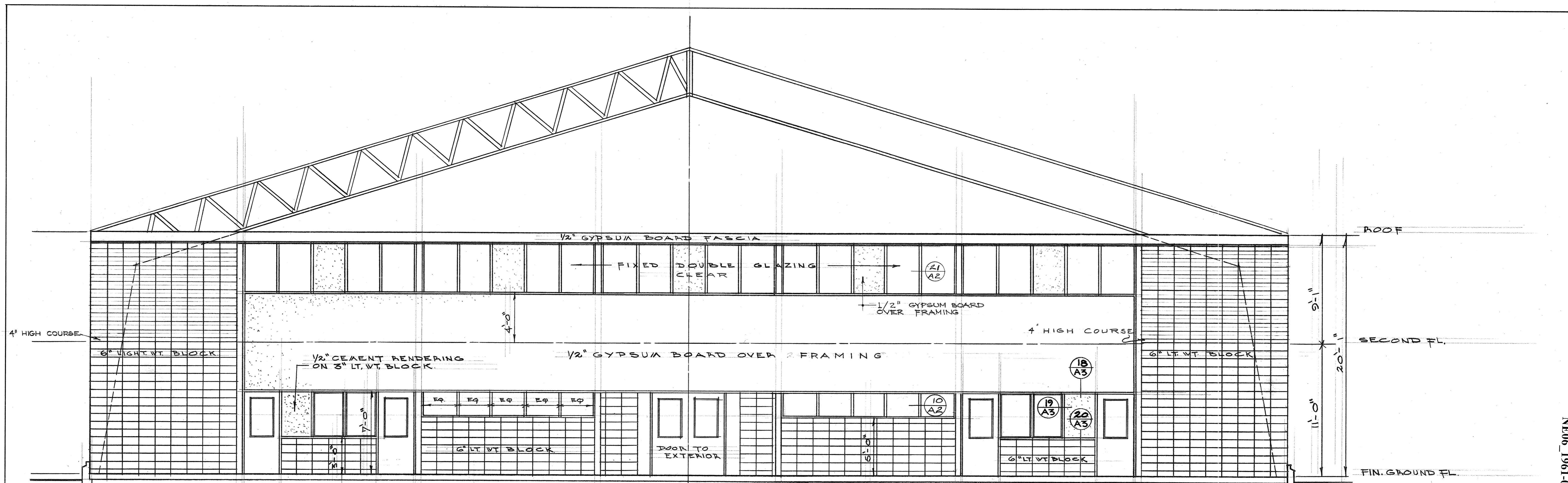
REVISIONS				Drawn by: J.A.C.	Checked by:	Approved:	TITLE OF DRAWING		Scale AS NOTED
No.	Date	Item	Initials				ELEVATION SECTION & DETAILS OF STEAM FITTING PLUMBING & SHEET METAL SHOP ARCHITECTURAL	SHT. 2 OF 9	

TITLE OF CONTRACT No 20-15-A2
BRITISH COLUMBIA VOCATIONAL SCHOOL
BURNABY, B.C. PHASE #2.

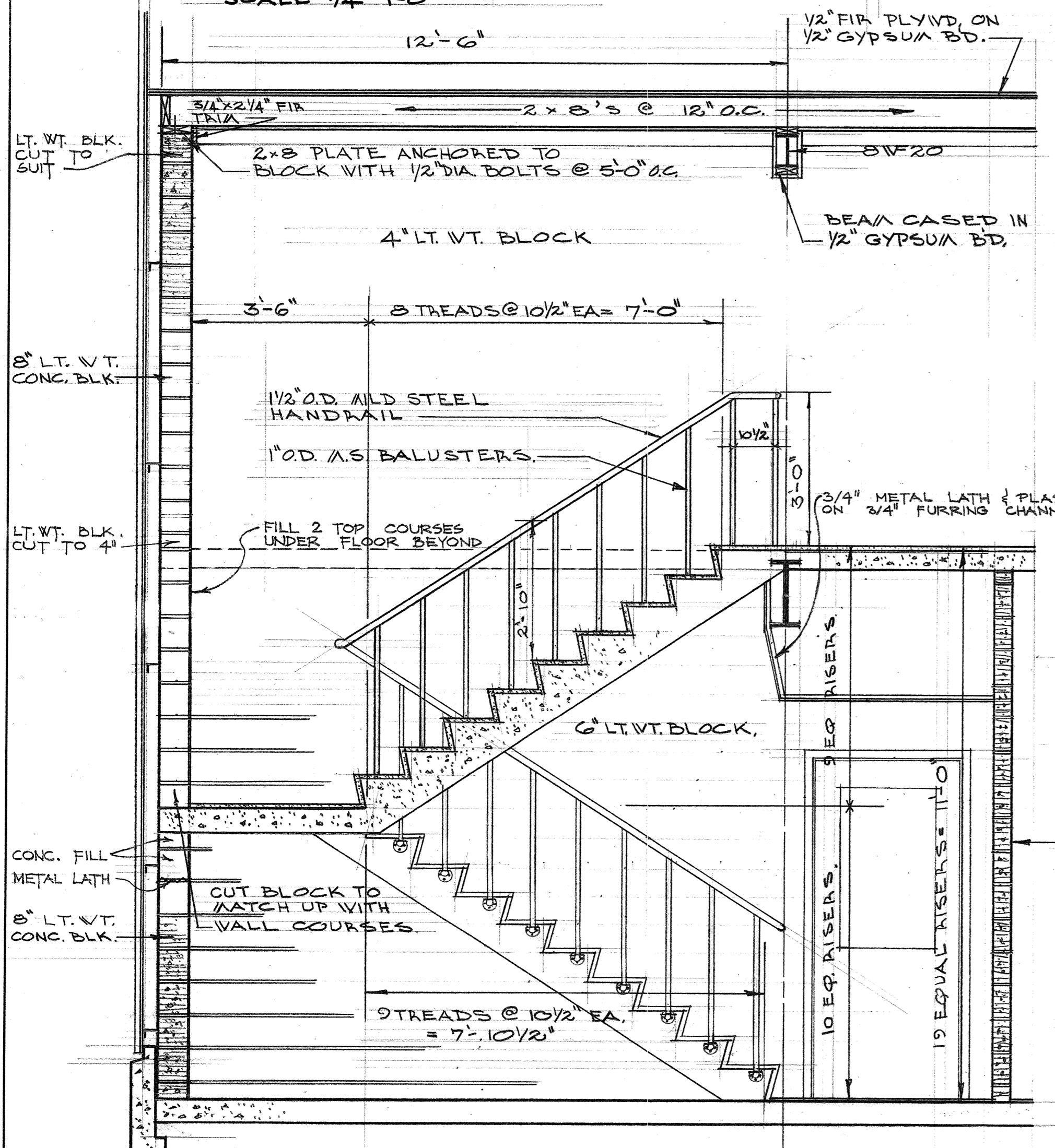
Date: JAN/61
Drawing No: 4651-A2

PROVINCIAL GOVERNMENT OF BRITISH COLUMBIA
DEPARTMENT OF PUBLIC WORKS

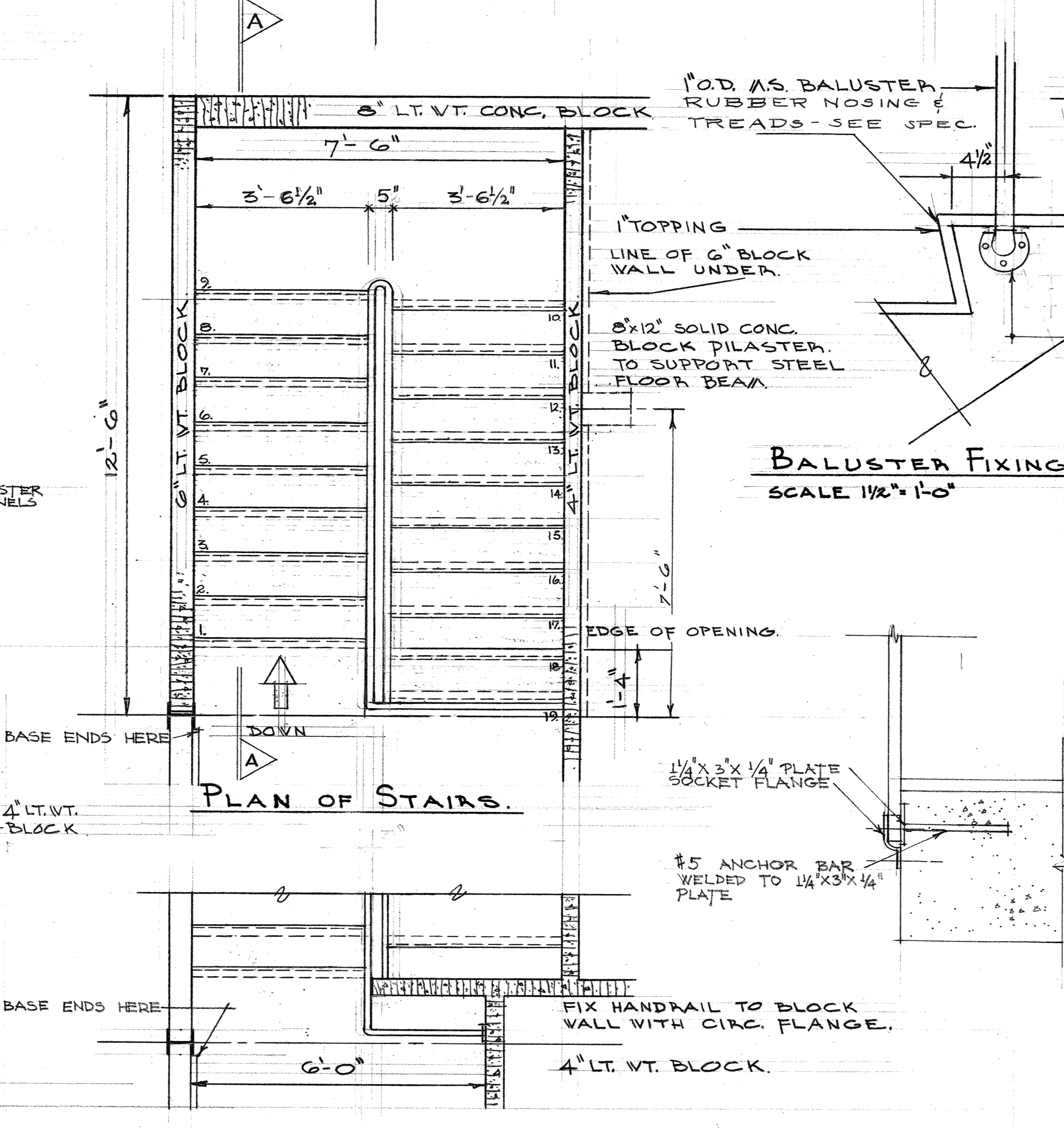
60-10-92



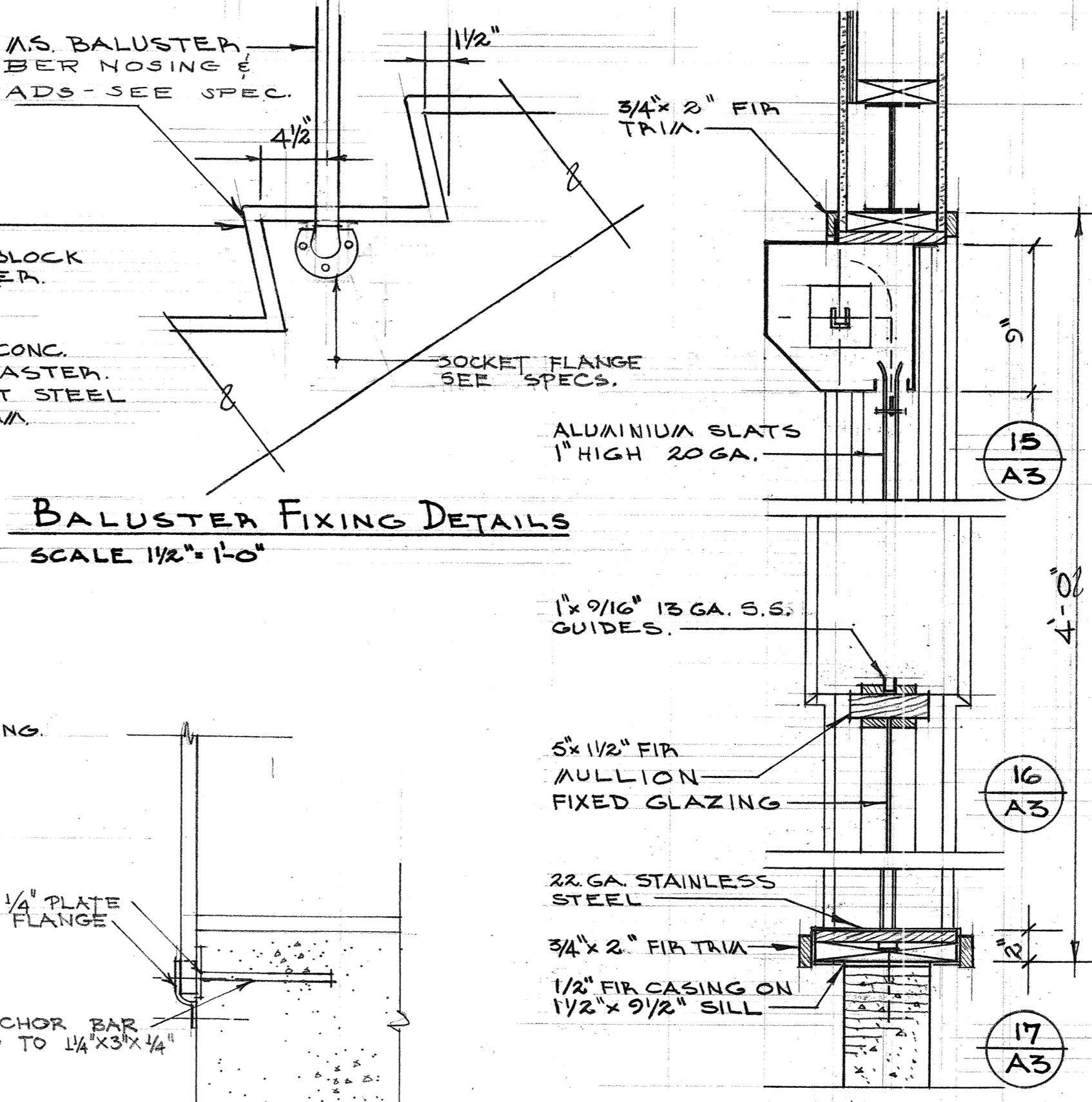
INTERIOR NORTH ELEVATION
SCALE 1/4" = 1'-0"



SECTION THRU STAIRS
SCALE 1/2" = 1'-0"

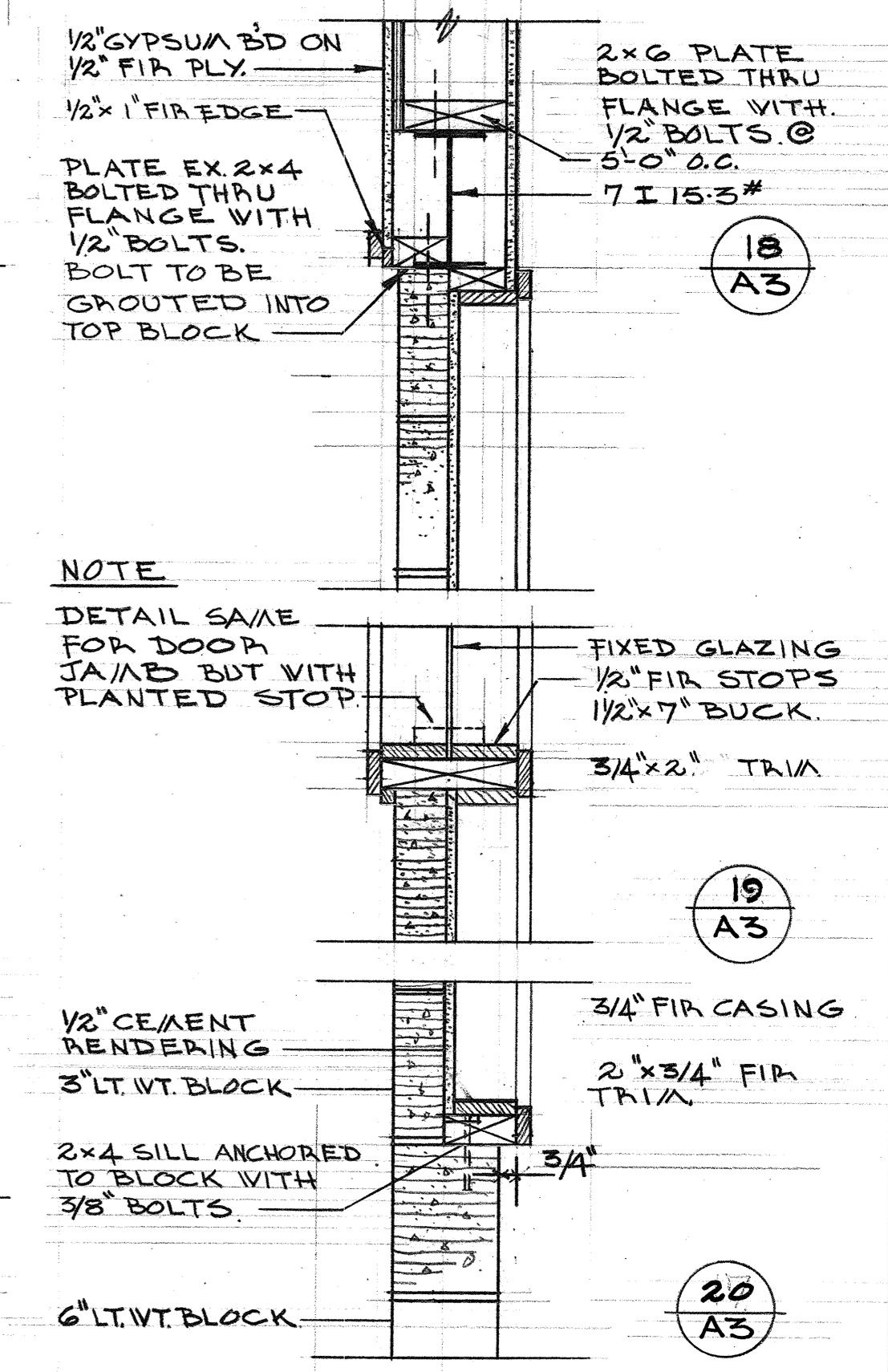


NORTH STAIRS AT 2ND FLOOR
SCALE 1/2" = 1'-0"



BALUSTER FIXING DETAILS
SCALE 1/2" = 1'-0"

TOOL RA PASS THRU
SCALE 1/2" = 1'-0"



NOTE
DETAIL SAME FOR DOOR JAMB BUT WITH PLANTED STOP

REVISIONS			
No.	Date	Item	Initials

TITLE OF CONTRACT **No 20-15-A3**
BRITISH COLUMBIA VOCATIONAL SCHOOL
BURNABY B.C. PHASE #2.

TITLE OF DRAWING
INTERIOR NORTH ELEVATION, STAIR DETAILS, PASS THRU MISC. DETAILS.

Scale
AS NOTED

File No.
52 B

Date
APRIL/61.

Drawing No.
4651 A3

Drawn by: **J.A.C.**
 Checked by:
 Approved: **[Signature]**

PROVINCIAL GOVERNMENT OF BRITISH COLUMBIA
 DEPARTMENT OF PUBLIC WORKS

39653