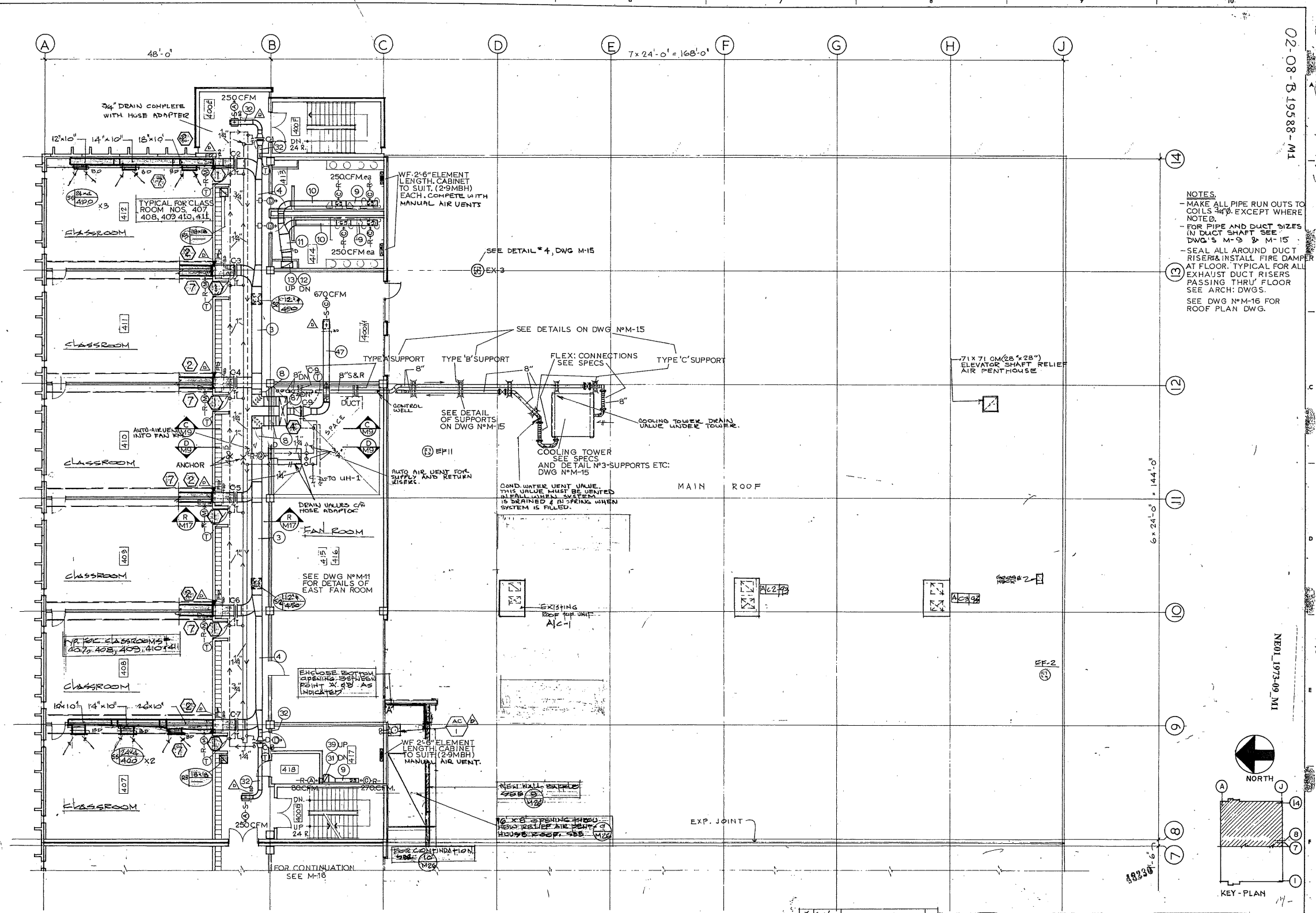
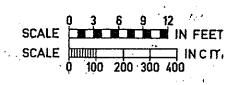


DUCT SIZE LEGEND		
NUMBER	METRIC SIZE	INCH SIZE
1	20 X 20cm	8 X 8
2	25 X 25cm	10 X 10
3	30 X 30cm	12 X 12
4	35 X 35cm	14 X 14
5	40 X 40cm	16 X 16
6	45 X 45cm	18 X 18
7	50 X 50cm	20 X 20
8	55 X 55cm	22 X 22
9	60 X 60cm	24 X 24
10	65 X 65cm	26 X 26
11	70 X 70cm	28 X 28
12	75 X 75cm	30 X 30
13	80 X 80cm	32 X 32
14	85 X 85cm	34 X 34
15	90 X 90cm	36 X 36
16	95 X 95cm	38 X 38
17	100 X 100cm	40 X 40
18	105 X 105cm	42 X 42
19	110 X 110cm	44 X 44
20	115 X 115cm	46 X 46
21	120 X 120cm	48 X 48
22	125 X 125cm	50 X 50
23	130 X 130cm	52 X 52
24	135 X 135cm	54 X 54
25	140 X 140cm	56 X 56
26	145 X 145cm	58 X 58
27	150 X 150cm	60 X 60
28	155 X 155cm	62 X 62
29	160 X 160cm	64 X 64
30	165 X 165cm	66 X 66
31	170 X 170cm	68 X 68
32	175 X 175cm	70 X 70
33	180 X 180cm	72 X 72
34	185 X 185cm	74 X 74
35	190 X 190cm	76 X 76
36	195 X 195cm	78 X 78
37	200 X 200cm	80 X 80
38	205 X 205cm	82 X 82
39	210 X 210cm	84 X 84
40	215 X 215cm	86 X 86
41	220 X 220cm	88 X 88
42	225 X 225cm	90 X 90
43	230 X 230cm	92 X 92
44	235 X 235cm	94 X 94
45	240 X 240cm	96 X 96
46	245 X 245cm	98 X 98
47	250 X 250cm	100 X 100
48	255 X 255cm	102 X 102
49	260 X 260cm	104 X 104
50	265 X 265cm	106 X 106
51	270 X 270cm	108 X 108
52	275 X 275cm	110 X 110
53	280 X 280cm	112 X 112
54	285 X 285cm	114 X 114
55	290 X 290cm	116 X 116
56	295 X 295cm	118 X 118
57	300 X 300cm	120 X 120
58	305 X 305cm	122 X 122
59	310 X 310cm	124 X 124
60	315 X 315cm	126 X 126
61	320 X 320cm	128 X 128
62	325 X 325cm	130 X 130
63	330 X 330cm	132 X 132
64	335 X 335cm	134 X 134
65	340 X 340cm	136 X 136
66	345 X 345cm	138 X 138
67	350 X 350cm	140 X 140
68	355 X 355cm	142 X 142
69	360 X 360cm	144 X 144
70	365 X 365cm	146 X 146
71	370 X 370cm	148 X 148
72	375 X 375cm	150 X 150
73	380 X 380cm	152 X 152
74	385 X 385cm	154 X 154
75	390 X 390cm	156 X 156
76	395 X 395cm	158 X 158
77	400 X 400cm	160 X 160
78	405 X 405cm	162 X 162
79	410 X 410cm	164 X 164
80	415 X 415cm	166 X 166
81	420 X 420cm	168 X 168
82	425 X 425cm	170 X 170
83	430 X 430cm	172 X 172
84	435 X 435cm	174 X 174
85	440 X 440cm	176 X 176
86	445 X 445cm	178 X 178
87	450 X 450cm	180 X 180
88	455 X 455cm	182 X 182
89	460 X 460cm	184 X 184
90	465 X 465cm	186 X 186
91	470 X 470cm	188 X 188
92	475 X 475cm	190 X 190
93	480 X 480cm	192 X 192
94	485 X 485cm	194 X 194
95	490 X 490cm	196 X 196
96	495 X 495cm	198 X 198
97	500 X 500cm	200 X 200
98	505 X 505cm	202 X 202
99	510 X 510cm	204 X 204
100	515 X 515cm	206 X 206
101	520 X 520cm	208 X 208



NOTES:
 - MAKE ALL PIPE RUN OUTS TO COILS 3/4" EXCEPT WHERE NOTED.
 - FOR PIPE AND DUCT SIZES IN DUCT SHAFT SEE DWG'S M-9 & M-15
 - SEAL ALL AROUND DUCT RISERS & INSTALL FIRE DAMPER AT FLOOR. TYPICAL FOR ALL EXHAUST DUCT RISERS PASSING THRU FLOOR SEE ARCH. DWG.
 SEE DWG M-16 FOR ROOF PLAN DWG.



8 JAN 92 AS BUILT D JAN 91 UPDATED RECORD DWGS. A C APR 89 POKED AS BUILT DWG. WT B APR 88 CHANGES COMPLETED XG A MAR 77 AS BUILT DWG. ET		MULTI-DISCIPLINE COMPLEX, B. C. V. S. BURNABY, B. C. MECHANICAL	
SHEET REPRODUCTION SIZE SCALE 1 0 INCHES 1 TENTHS EIGHTHS		FOURTH FLOOR PLAN EAST END HEATING & VENTILATION GOVERNMENT OF BRITISH COLUMBIA DEPARTMENT OF PUBLIC WORKS	
REVISIONS DIRECTOR OF DESIGN DATE SEPT 14, 1973		DRAWN E.T. DESIGNED RAMATOL CHECKED (Signature) M1 SHY. 4. 0227	

02-08-B-19588-M1

NE01 1973-09 M1

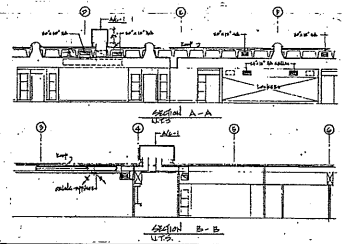
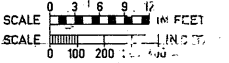
200300

DUCT SIZE LEGEND

NUMBER	METRIC SIZE	INCH SIZE
1	20 X 20cm	8 X 8
2	25 X 15cm	10 X 6
3	41 X 30cm	16 X 12
4	36 X 10cm	14 X 4
5	36 X 30cm	14 X 12
6	56 X 30cm	22 X 12
7	66 X 41cm	26 X 16
8	66 X 15cm	26 X 6
9	61 X 20cm	24 X 8
10	36 X 20cm	14 X 8
11	61 X 46cm	24 X 18
12	61 X 25cm	24 X 10
13	76 X 46cm	30 X 18
14	46 X 25cm	18 X 10
15	61 X 25cm	24 X 10
16	81 X 41cm	32 X 16
17	46 X 25cm	18 X 10
18	76 X 25cm	30 X 10
19	76 X 36cm	30 X 14
20	1.98 X 0.61m	28 X 24
21	56 X 41cm	22 X 16
22	56 X 51cm	22 X 20
23	41 X 25cm	16 X 10
24	51 X 25cm	20 X 10
25	1.22 X 0.46m	48 X 18
26	1.01 X 0.71m	50 X 22
27	86 X 46cm	34 X 18
28	66 X 46cm	26 X 18
29	66 X 36cm	26 X 14
30	30 X 30cm	12 X 12
31	51 X 36cm	20 X 14
32	30 X 15cm	12 X 6
33	36 X 25cm	14 X 10
34	51 X 46cm	22 X 18
35	56 X 46cm	22 X 18
36	56 X 20cm	22 X 8
37	71 X 46cm	28 X 18
38	91 X 51cm	36 X 20
39	51 X 36cm	20 X 14
40	71 X 36cm	28 X 14
41	46 X 61cm	18 X 24
42	46 X 51cm	18 X 20
43	51 X 51cm	18 X 20
44	1.88 X 0.71m	66 X 28
45	25 X 25cm	10 X 10
46	41 X 36cm	16 X 14
47	41 X 20cm	16 X 8
48	61 X 36cm	24 X 12
49	30 X 20cm	12 X 8
50	1.22 X 1.83m	48 X 72
51	2.94 X 0.61m	96 X 24
52	1.22 X 0.71m	48 X 28
53	86 X 71cm	34 X 28
54	1.27 X 0.56m	50 X 22
55	71 X 41cm	28 X 16
56	51 X 41cm	20 X 16
57	51 X 20cm	20 X 8
58	36 X 36cm	14 X 14
59	46 X 36cm	18 X 14
60	46 X 46cm	18 X 18
61	61 X 56cm	24 X 22
62	61 X 61cm	24 X 24
63	46 X 18cm	18 X 8
64	56 X 25cm	22 X 10
65	61 X 41cm	24 X 16
66	61 X 51cm	24 X 20
67	66 X 51cm	26 X 20
68	46 X 20cm	18 X 8
69	86 X 51cm	34 X 20
70	97 X 51cm	38 X 20
71	1.72 X 0.51m	68 X 20
72	1.38 X 0.51m	54 X 20
73	76 X 30cm	30 X 12
74	76 X 41cm	30 X 16
75	56 X 15cm	22 X 6
76	71 X 51cm	28 X 20
77	1.42 X 0.51m	58 X 20
78	71 X 25cm	28 X 10
79	71 X 20cm	28 X 8
80	71 X 61cm	28 X 24
81	46 X 15cm	18 X 6
82	1.06 X 0.51m	42 X 20
83	71 X 36cm	28 X 14
84	56 X 36cm	22 X 14
85	91 X 61cm	36 X 24
86	56 X 61cm	22 X 24
87	1.98 X 0.41m	78 X 16
88	71 X 71cm	28 X 28
89	56 X 20cm	18 X 8
90	1.78 X 0.51m	70 X 20
91	76 X 51cm	30 X 20
92	81 X 46cm	32 X 18
93	61 X 36cm	24 X 14
94	81 X 81cm	32 X 32
95	1.32 X 0.61m	54 X 24
96	1.47 X 0.61m	58 X 24
97	66 X 61cm	26 X 24
98	1.22 X 1.22m	48 X 48
99	2.13 X 0.61m	84 X 24
100	1.22 X 0.61m	48 X 24
101	1.01 X 0.46m	40 X 18

- 1. Refer to mechanical schedule for details.
- 2. For air and water connections, consult the schedule.
- 3. Confirm to building details with the manufacturer.
- 4. The manufacturer's schedule is a reference only; confirm to building details.
- 5. Confirm to schedule for details.
- 6. Confirm to schedule for details.
- 7. Confirm to schedule for details.
- 8. Confirm to schedule for details.
- 9. Confirm to schedule for details.
- 10. Confirm to schedule for details.
- 11. Confirm to schedule for details.
- 12. Confirm to schedule for details.
- 13. Confirm to schedule for details.
- 14. Confirm to schedule for details.
- 15. Confirm to schedule for details.
- 16. Confirm to schedule for details.
- 17. Confirm to schedule for details.
- 18. Confirm to schedule for details.
- 19. Confirm to schedule for details.
- 20. Confirm to schedule for details.
- 21. Confirm to schedule for details.
- 22. Confirm to schedule for details.
- 23. Confirm to schedule for details.
- 24. Confirm to schedule for details.
- 25. Confirm to schedule for details.
- 26. Confirm to schedule for details.
- 27. Confirm to schedule for details.
- 28. Confirm to schedule for details.
- 29. Confirm to schedule for details.
- 30. Confirm to schedule for details.
- 31. Confirm to schedule for details.
- 32. Confirm to schedule for details.
- 33. Confirm to schedule for details.
- 34. Confirm to schedule for details.
- 35. Confirm to schedule for details.
- 36. Confirm to schedule for details.
- 37. Confirm to schedule for details.
- 38. Confirm to schedule for details.
- 39. Confirm to schedule for details.
- 40. Confirm to schedule for details.
- 41. Confirm to schedule for details.
- 42. Confirm to schedule for details.
- 43. Confirm to schedule for details.
- 44. Confirm to schedule for details.
- 45. Confirm to schedule for details.
- 46. Confirm to schedule for details.
- 47. Confirm to schedule for details.
- 48. Confirm to schedule for details.
- 49. Confirm to schedule for details.
- 50. Confirm to schedule for details.
- 51. Confirm to schedule for details.
- 52. Confirm to schedule for details.
- 53. Confirm to schedule for details.
- 54. Confirm to schedule for details.
- 55. Confirm to schedule for details.
- 56. Confirm to schedule for details.
- 57. Confirm to schedule for details.
- 58. Confirm to schedule for details.
- 59. Confirm to schedule for details.
- 60. Confirm to schedule for details.
- 61. Confirm to schedule for details.
- 62. Confirm to schedule for details.
- 63. Confirm to schedule for details.
- 64. Confirm to schedule for details.
- 65. Confirm to schedule for details.
- 66. Confirm to schedule for details.
- 67. Confirm to schedule for details.
- 68. Confirm to schedule for details.
- 69. Confirm to schedule for details.
- 70. Confirm to schedule for details.
- 71. Confirm to schedule for details.
- 72. Confirm to schedule for details.
- 73. Confirm to schedule for details.
- 74. Confirm to schedule for details.
- 75. Confirm to schedule for details.
- 76. Confirm to schedule for details.
- 77. Confirm to schedule for details.
- 78. Confirm to schedule for details.
- 79. Confirm to schedule for details.
- 80. Confirm to schedule for details.
- 81. Confirm to schedule for details.
- 82. Confirm to schedule for details.
- 83. Confirm to schedule for details.
- 84. Confirm to schedule for details.
- 85. Confirm to schedule for details.
- 86. Confirm to schedule for details.
- 87. Confirm to schedule for details.
- 88. Confirm to schedule for details.
- 89. Confirm to schedule for details.
- 90. Confirm to schedule for details.
- 91. Confirm to schedule for details.
- 92. Confirm to schedule for details.
- 93. Confirm to schedule for details.
- 94. Confirm to schedule for details.
- 95. Confirm to schedule for details.
- 96. Confirm to schedule for details.
- 97. Confirm to schedule for details.
- 98. Confirm to schedule for details.
- 99. Confirm to schedule for details.
- 100. Confirm to schedule for details.
- 101. Confirm to schedule for details.

NOTE: COILS C-32 TO C-40 ALL HAVE MANUAL AIR VENTS LOCATED AT THESE COILS.



REVISIONS	DATE	BY	CHK
E. JAN 94 AS BUILT			
D. JAN. 91 UPDATED RECORD DWGS.			
C. APRIL 89 UPDATED AS-BUILT PANS W/IT			
B. APRIL 88 CHANGES COMPLETE			
A. MAR 77 AS BUILT DWG			

**MULTI-DISCIPLINE COMPLEX,
B. C. V. S.
BURNABY, B. C.**

THIRD FLOOR PLAN.
HEATING & VENTILATION.

GOVERNMENT OF BRITISH COLUMBIA
DEPARTMENT OF PUBLIC WORKS

DATE SEPT 14, 1973

MECHANICAL
20-105
M-2

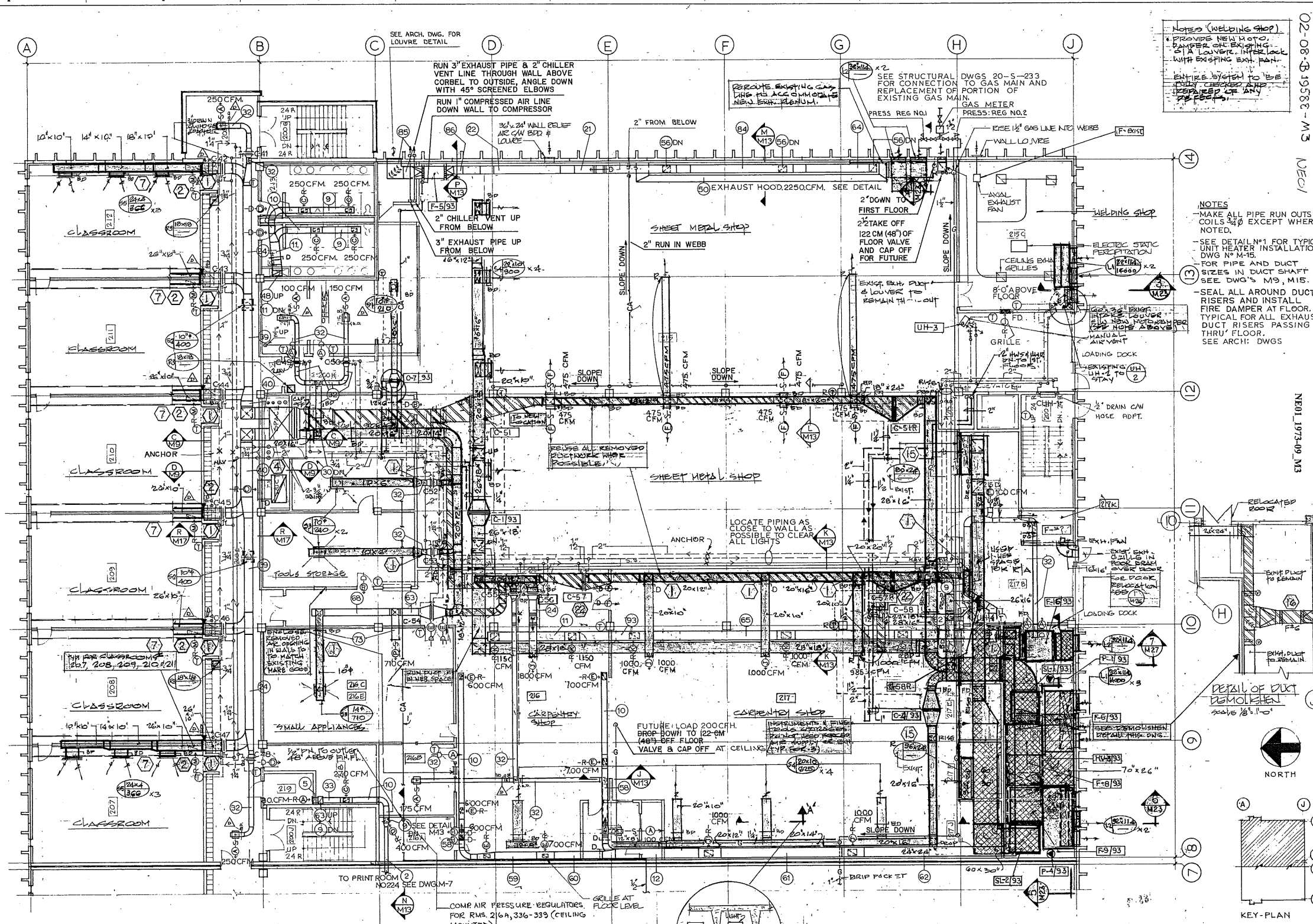
- NOTES**
- 1. MAKE ALL PIPE RUN OUTS TO COILS 3/20 EXCEPT WHERE NOTED.
 - 2. FOR PIPE AND DUCT SIZES IN DUCT SHAFT SEE DWG'S M-9, M-15.
 - 3. SEAL ALL AROUND DUCT RISERS AND INSTALL FIRE DAMPER AT FLOOR. TYPICAL FOR ALL EXHAUST DUCT RISERS PASSING THRU FLOOR SEE ARCH. DWGS.

- 1. AS NOTED OTHERWISE.
- 2. 1/2" DIA. # 400 "EF" ON ROOF.
- 3. 1/2" DIA. # 400 "EF" ON ROOF.
- 4. 1/2" DIA. # 400 "EF" ON ROOF.
- 5. 1/2" DIA. # 400 "EF" ON ROOF.
- 6. 1/2" DIA. # 400 "EF" ON ROOF.
- 7. 1/2" DIA. # 400 "EF" ON ROOF.
- 8. 1/2" DIA. # 400 "EF" ON ROOF.
- 9. 1/2" DIA. # 400 "EF" ON ROOF.
- 10. 1/2" DIA. # 400 "EF" ON ROOF.
- 11. 1/2" DIA. # 400 "EF" ON ROOF.
- 12. 1/2" DIA. # 400 "EF" ON ROOF.
- 13. 1/2" DIA. # 400 "EF" ON ROOF.
- 14. 1/2" DIA. # 400 "EF" ON ROOF.
- 15. 1/2" DIA. # 400 "EF" ON ROOF.
- 16. 1/2" DIA. # 400 "EF" ON ROOF.
- 17. 1/2" DIA. # 400 "EF" ON ROOF.
- 18. 1/2" DIA. # 400 "EF" ON ROOF.
- 19. 1/2" DIA. # 400 "EF" ON ROOF.
- 20. 1/2" DIA. # 400 "EF" ON ROOF.
- 21. 1/2" DIA. # 400 "EF" ON ROOF.
- 22. 1/2" DIA. # 400 "EF" ON ROOF.
- 23. 1/2" DIA. # 400 "EF" ON ROOF.
- 24. 1/2" DIA. # 400 "EF" ON ROOF.
- 25. 1/2" DIA. # 400 "EF" ON ROOF.
- 26. 1/2" DIA. # 400 "EF" ON ROOF.
- 27. 1/2" DIA. # 400 "EF" ON ROOF.
- 28. 1/2" DIA. # 400 "EF" ON ROOF.
- 29. 1/2" DIA. # 400 "EF" ON ROOF.
- 30. 1/2" DIA. # 400 "EF" ON ROOF.
- 31. 1/2" DIA. # 400 "EF" ON ROOF.
- 32. 1/2" DIA. # 400 "EF" ON ROOF.
- 33. 1/2" DIA. # 400 "EF" ON ROOF.
- 34. 1/2" DIA. # 400 "EF" ON ROOF.
- 35. 1/2" DIA. # 400 "EF" ON ROOF.
- 36. 1/2" DIA. # 400 "EF" ON ROOF.
- 37. 1/2" DIA. # 400 "EF" ON ROOF.
- 38. 1/2" DIA. # 400 "EF" ON ROOF.
- 39. 1/2" DIA. # 400 "EF" ON ROOF.
- 40. 1/2" DIA. # 400 "EF" ON ROOF.
- 41. 1/2" DIA. # 400 "EF" ON ROOF.
- 42. 1/2" DIA. # 400 "EF" ON ROOF.
- 43. 1/2" DIA. # 400 "EF" ON ROOF.
- 44. 1/2" DIA. # 400 "EF" ON ROOF.
- 45. 1/2" DIA. # 400 "EF" ON ROOF.
- 46. 1/2" DIA. # 400 "EF" ON ROOF.
- 47. 1/2" DIA. # 400 "EF" ON ROOF.
- 48. 1/2" DIA. # 400 "EF" ON ROOF.
- 49. 1/2" DIA. # 400 "EF" ON ROOF.
- 50. 1/2" DIA. # 400 "EF" ON ROOF.
- 51. 1/2" DIA. # 400 "EF" ON ROOF.
- 52. 1/2" DIA. # 400 "EF" ON ROOF.
- 53. 1/2" DIA. # 400 "EF" ON ROOF.
- 54. 1/2" DIA. # 400 "EF" ON ROOF.
- 55. 1/2" DIA. # 400 "EF" ON ROOF.
- 56. 1/2" DIA. # 400 "EF" ON ROOF.
- 57. 1/2" DIA. # 400 "EF" ON ROOF.
- 58. 1/2" DIA. # 400 "EF" ON ROOF.
- 59. 1/2" DIA. # 400 "EF" ON ROOF.
- 60. 1/2" DIA. # 400 "EF" ON ROOF.
- 61. 1/2" DIA. # 400 "EF" ON ROOF.
- 62. 1/2" DIA. # 400 "EF" ON ROOF.
- 63. 1/2" DIA. # 400 "EF" ON ROOF.
- 64. 1/2" DIA. # 400 "EF" ON ROOF.
- 65. 1/2" DIA. # 400 "EF" ON ROOF.
- 66. 1/2" DIA. # 400 "EF" ON ROOF.
- 67. 1/2" DIA. # 400 "EF" ON ROOF.
- 68. 1/2" DIA. # 400 "EF" ON ROOF.
- 69. 1/2" DIA. # 400 "EF" ON ROOF.
- 70. 1/2" DIA. # 400 "EF" ON ROOF.
- 71. 1/2" DIA. # 400 "EF" ON ROOF.
- 72. 1/2" DIA. # 400 "EF" ON ROOF.
- 73. 1/2" DIA. # 400 "EF" ON ROOF.
- 74. 1/2" DIA. # 400 "EF" ON ROOF.
- 75. 1/2" DIA. # 400 "EF" ON ROOF.
- 76. 1/2" DIA. # 400 "EF" ON ROOF.
- 77. 1/2" DIA. # 400 "EF" ON ROOF.
- 78. 1/2" DIA. # 400 "EF" ON ROOF.
- 79. 1/2" DIA. # 400 "EF" ON ROOF.
- 80. 1/2" DIA. # 400 "EF" ON ROOF.
- 81. 1/2" DIA. # 400 "EF" ON ROOF.
- 82. 1/2" DIA. # 400 "EF" ON ROOF.
- 83. 1/2" DIA. # 400 "EF" ON ROOF.
- 84. 1/2" DIA. # 400 "EF" ON ROOF.
- 85. 1/2" DIA. # 400 "EF" ON ROOF.
- 86. 1/2" DIA. # 400 "EF" ON ROOF.
- 87. 1/2" DIA. # 400 "EF" ON ROOF.
- 88. 1/2" DIA. # 400 "EF" ON ROOF.
- 89. 1/2" DIA. # 400 "EF" ON ROOF.
- 90. 1/2" DIA. # 400 "EF" ON ROOF.
- 91. 1/2" DIA. # 400 "EF" ON ROOF.
- 92. 1/2" DIA. # 400 "EF" ON ROOF.
- 93. 1/2" DIA. # 400 "EF" ON ROOF.
- 94. 1/2" DIA. # 400 "EF" ON ROOF.
- 95. 1/2" DIA. # 400 "EF" ON ROOF.
- 96. 1/2" DIA. # 400 "EF" ON ROOF.
- 97. 1/2" DIA. # 400 "EF" ON ROOF.
- 98. 1/2" DIA. # 400 "EF" ON ROOF.
- 99. 1/2" DIA. # 400 "EF" ON ROOF.
- 100. 1/2" DIA. # 400 "EF" ON ROOF.
- 101. 1/2" DIA. # 400 "EF" ON ROOF.



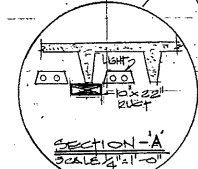
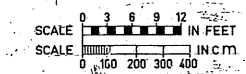
KEY PLAN

DUCT SIZE LEGEND		
NUMBER	METRIC SIZE	INCH SIZE
1	20 x 20cm	8 x 8
2	25 x 15cm	10 x 6
3	30 x 30cm	12 x 12
4	41 x 30cm	16 x 12
5	30 x 10cm	14 x 4
6	36 x 30cm	14 x 12
7	50 x 30cm	22 x 12
8	66 x 41cm	26 x 16
9	36 x 15cm	14 x 6
10	36 x 20cm	14 x 8
11	61 x 20cm	24 x 8
12	61 x 46cm	24 x 18
13	76 x 46cm	30 x 18
14	30 x 25cm	12 x 10
15	81 x 25cm	12 x 10
16	81 x 41cm	32 x 16
17	46 x 25cm	18 x 10
18	76 x 25cm	30 x 10
19	76 x 36cm	30 x 14
20	1.98 x 0.61m	78 x 24
21	58 x 41cm	22 x 16
22	58 x 51cm	22 x 20
23	41 x 25cm	16 x 10
24	51 x 25cm	20 x 10
25	1.22 x 0.46m	48 x 18
26	1.01 x 0.71m	40 x 28
27	81 x 46cm	32 x 18
28	66 x 46cm	26 x 18
29	66 x 36cm	26 x 14
30	40 x 30cm	12 x 12
31	51 x 30cm	20 x 12
32	30 x 15cm	12 x 6
33	30 x 25cm	12 x 10
34	51 x 46cm	20 x 18
35	56 x 46cm	22 x 18
36	56 x 20cm	22 x 8
37	71 x 46cm	28 x 18
38	91 x 51cm	36 x 20
39	51 x 36cm	18 x 14
40	71 x 36cm	28 x 14
41	46 x 61cm	18 x 24
42	46 x 51cm	18 x 20
43	51 x 51cm	20 x 20
44	1.48 x 0.71m	66 x 28
45	25 x 25cm	10 x 10
46	41 x 36cm	16 x 14
47	41 x 20cm	16 x 8
48	61 x 30cm	24 x 12
49	30 x 20cm	12 x 8
50	1.22 x 1.83m	48 x 72
51	2.44 x 0.60m	96 x 24
52	1.22 x 0.71m	48 x 28
53	86 x 71cm	36 x 28
54	1.27 x 0.56m	50 x 22
55	71 x 41cm	28 x 16
56	51 x 41cm	20 x 16
57	51 x 20cm	20 x 8
58	36 x 36cm	14 x 14
59	46 x 36cm	18 x 14
60	46 x 46cm	18 x 18
61	61 x 56cm	24 x 22
62	46 x 30cm	18 x 12
63	46 x 30cm	18 x 12
64	56 x 25cm	22 x 10
65	61 x 41cm	26 x 16
66	61 x 51cm	24 x 20
67	66 x 51cm	26 x 20
68	46 x 20cm	18 x 8
69	86 x 51cm	36 x 20
70	97 x 51cm	38 x 20
71	1.72 x 0.51m	68 x 20
72	1.98 x 0.71m	78 x 28
73	76 x 30cm	30 x 12
74	76 x 41cm	30 x 16
75	56 x 13cm	22 x 6
76	71 x 51cm	28 x 20
77	1.42 x 0.51m	56 x 20
78	71 x 25cm	28 x 10
79	71 x 20cm	28 x 8
80	71 x 61cm	28 x 24
81	46 x 15cm	18 x 6
82	1.06 x 0.51m	42 x 20
83	71 x 30cm	28 x 12
84	56 x 30cm	22 x 14
85	91 x 61cm	36 x 24
86	56 x 61cm	22 x 24
87	1.98 x 0.41m	78 x 16
88	71 x 71cm	28 x 28
89	25 x 20cm	10 x 8
90	1.78 x 0.51m	70 x 20
91	76 x 51cm	30 x 20
92	91 x 46cm	36 x 18
93	61 x 36cm	24 x 14
94	81 x 81cm	32 x 32
95	1.32 x 0.61m	52 x 24
96	1.47 x 0.61m	58 x 24
97	66 x 61cm	26 x 24
98	1.22 x 1.22m	48 x 48
99	2.13 x 0.61m	86 x 24
100	1.22 x 0.61m	48 x 24
101	1.01 x 0.46m	40 x 18



NOTES (WELDING SHOP)
 1. PROVIDE NEW PHOTO DAMPER ON EXISTING 2" LAUNDRY INTERLOCK WITH EXISTING EXH. FAN.
 2. ENTIRE SYSTEM TO BE REPAIRED OR REPLACED IF ANY OF THE ABOVE.

NOTES
 - MAKE ALL PIPE RUN OUTS TO COILS 3" EXCEPT WHERE NOTED.
 - SEE DETAIL N#1 FOR TYPICAL UNIT HEATER INSTALLATION DWG. M-15.
 - FOR PIPE AND DUCT SIZES IN DUCT SHAFT SEE DWG'S M-9, M-15.
 - SEAL ALL AROUND DUCT RISERS AND INSTALL FIRE DAMPER AT FLOOR. TYPICAL FOR ALL EXHAUST DUCT RISERS PASSING THRU FLOOR. SEE ARCH. DWGS.



REVISIONS	DATE	BY	DESCRIPTION
B	JAN 79	AS BUILT	
D	JAN 91	UPDATED RECORD DWGS.	A
C	APR 86	REVISED DWGS.	WT
B	APR 86	CHANGES COMPLETED	WT
A	MAR 77	AS BUILT DWG.	A

**MULTI-DISCIPLINE COMPLEX,
 B. C. V. S. BURNABY, B. C.**

SECOND FLOOR PLAN.
 EAST END.

HEATING & VENTILATION
 GOVERNMENT OF BRITISH COLUMBIA
 DEPARTMENT OF PUBLIC WORKS

DATE SEPT 14, 1973

MECHANICAL
 20-105
M-3

KEY PLAN

02-08-B-1958C-M3
 NECI

NE01_1973-09_M3

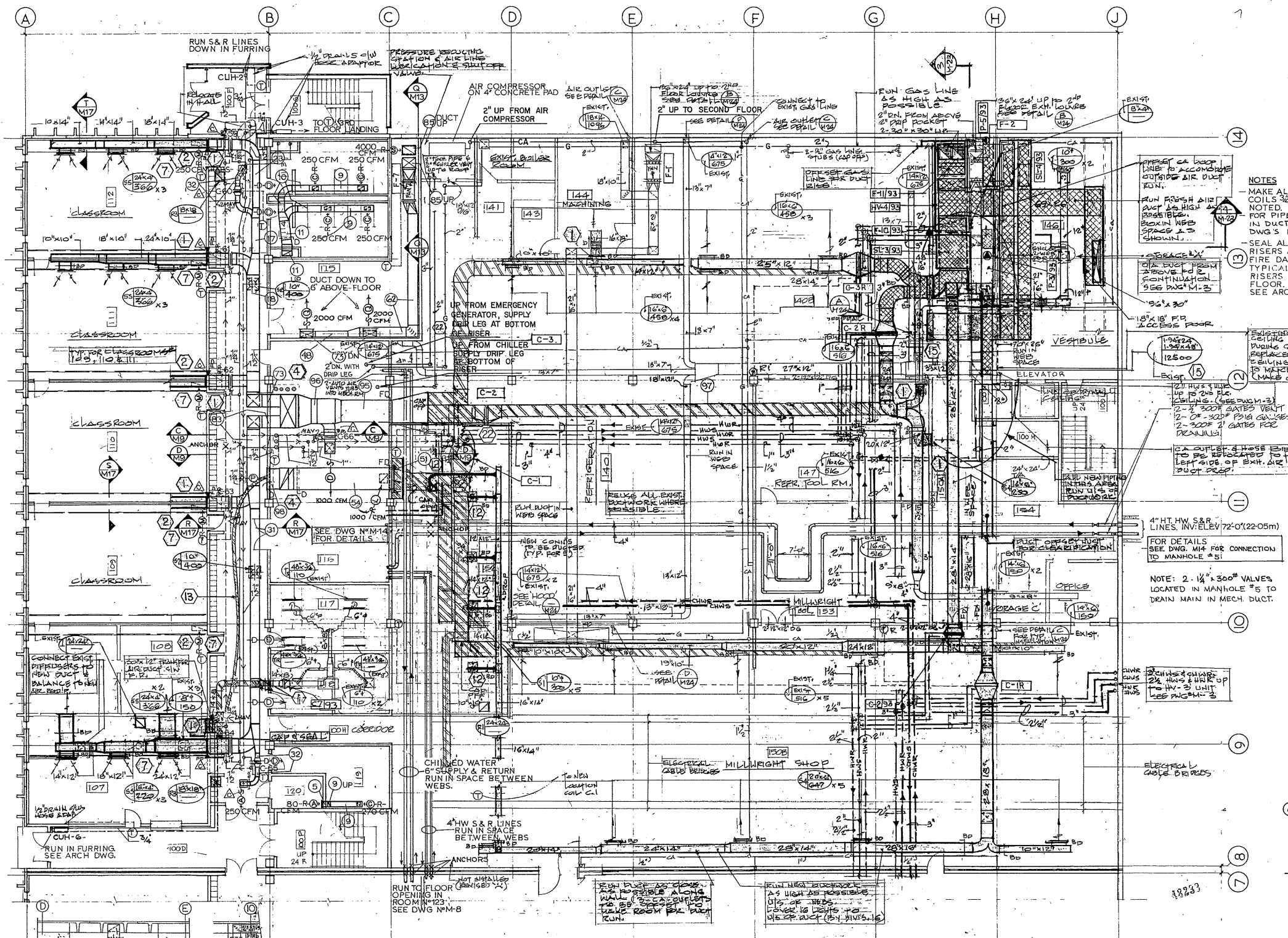
200302

02-08-B-19588-M4

NE01

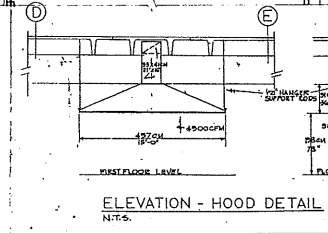
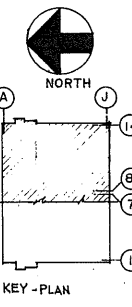
DUCT SIZE LEGEND

NUMBER	METRIC SIZE	INCH SIZE
1	20 X 20cm	8 X 8
2	25 X 15cm	10 X 6
3	66 X 30cm	26 X 12
4	41 X 30cm	16 X 12
5	38 X 10cm	14 X 4
6	36 X 30cm	14 X 12
7	56 X 30cm	22 X 12
8	66 X 41cm	26 X 16
9	36 X 15cm	14 X 6
10	36 X 20cm	14 X 8
11	61 X 25cm	24 X 10
12	61 X 46cm	24 X 18
13	76 X 25cm	30 X 10
14	30 X 25cm	12 X 10
15	61 X 25cm	24 X 10
16	81 X 41cm	32 X 16
17	46 X 25cm	18 X 10
18	76 X 25cm	30 X 10
19	76 X 38cm	30 X 14
20	1.98 X 0.61m	78 X 24
21	56 X 41cm	22 X 16
22	56 X 51cm	22 X 20
23	41 X 25cm	16 X 10
24	51 X 25cm	20 X 10
25	1.02 X 0.46m	48 X 18
26	1.01 X 0.71m	40 X 28
27	86 X 46cm	34 X 18
28	66 X 46cm	26 X 18
29	66 X 38cm	26 X 14
30	51 X 30cm	20 X 12
31	51 X 30cm	20 X 12
32	30 X 15cm	12 X 6
33	36 X 25cm	14 X 10
34	51 X 46cm	20 X 18
35	56 X 46cm	22 X 18
36	46 X 25cm	18 X 10
37	71 X 46cm	28 X 18
38	91 X 51cm	36 X 20
39	51 X 38cm	20 X 14
40	71 X 38cm	28 X 14
41	46 X 61cm	18 X 24
42	46 X 51cm	18 X 20
43	51 X 51cm	20 X 20
44	1.08 X 0.71m	66 X 28
45	25 X 25cm	10 X 10
46	41 X 36cm	16 X 14
47	41 X 20cm	16 X 8
48	61 X 30cm	24 X 12
49	30 X 20cm	12 X 8
50	1.22 X 18.3m	96 X 720
51	2.49 X 0.61m	96 X 24
52	1.22 X 0.71m	48 X 28
53	86 X 71cm	34 X 28
54	1.27 X 0.36m	50 X 22
55	71 X 41cm	28 X 16
56	51 X 41cm	20 X 16
57	51 X 20cm	20 X 8
58	36 X 36cm	14 X 14
59	46 X 36cm	18 X 14
60	46 X 46cm	18 X 18
61	61 X 56cm	24 X 22
62	61 X 61cm	24 X 24
63	46 X 30cm	18 X 12
64	56 X 25cm	22 X 10
65	61 X 41cm	24 X 16
66	61 X 51cm	24 X 20
67	66 X 51cm	26 X 20
68	46 X 20cm	18 X 8
69	86 X 51cm	34 X 20
70	97 X 51cm	38 X 20
71	1.72 X 0.51m	68 X 20
72	1.98 X 0.71m	78 X 28
73	76 X 30cm	30 X 12
74	76 X 41cm	30 X 16
75	56 X 15cm	22 X 6
76	71 X 51cm	28 X 20
77	1.42 X 0.51m	56 X 20
78	71 X 25cm	28 X 10
79	71 X 20cm	28 X 8
80	71 X 61cm	28 X 24
81	46 X 15cm	18 X 6
82	1.08 X 0.51m	42 X 20
83	71 X 30cm	28 X 12
84	56 X 36cm	22 X 14
85	91 X 61cm	36 X 24
86	56 X 61cm	22 X 24
87	1.98 X 0.91m	78 X 36
88	71 X 71cm	28 X 28
89	25 X 20cm	10 X 8
90	1.78 X 0.51m	70 X 20
91	76 X 51cm	30 X 20
92	91 X 46cm	36 X 18
93	61 X 36cm	24 X 14
94	81 X 81cm	32 X 32
95	1.32 X 0.61m	52 X 24
96	1.47 X 0.61m	58 X 24
97	66 X 61cm	26 X 24
98	1.22 X 1.22m	48 X 48
99	2.13 X 0.61m	84 X 24
100	1.22 X 0.61m	48 X 24
101	1.01 X 0.46m	40 X 18



NOTES

- MAKE ALL PIPE RUN OUTS TO COILS 3/4" EXCEPT WHERE NOTED.
- FOR PIPE AND DUCT SIZES IN DUCT SHAFTS SEE DWGS M-3 & M-15.
- SEAL ALL AROUND DUCT RISERS AND INSTALL FIRE DAMPER AT FLOOR. TYPICAL FOR ALL EXH. DUCT RISERS PASSING THRU FLOOR. SEE ARCH. DWGS.
- EXISTING DRYWALL CEILING TO BE REMOVED DURING CONSTRUCTION & REPLACED WITH NEW PENALTY CEILING. PRIMER & PAINT TO MATCH EXISTING. (MAKE GOOD)
- EXISTING DRYWALL CEILING TO BE REMOVED DURING CONSTRUCTION & REPLACED WITH NEW PENALTY CEILING. PRIMER & PAINT TO MATCH EXISTING. (MAKE GOOD)
- EXISTING DRYWALL CEILING TO BE REMOVED DURING CONSTRUCTION & REPLACED WITH NEW PENALTY CEILING. PRIMER & PAINT TO MATCH EXISTING. (MAKE GOOD)



SCALE 3 6 9 12 IN FEET
SCALE 100 200 300 400 IN CM

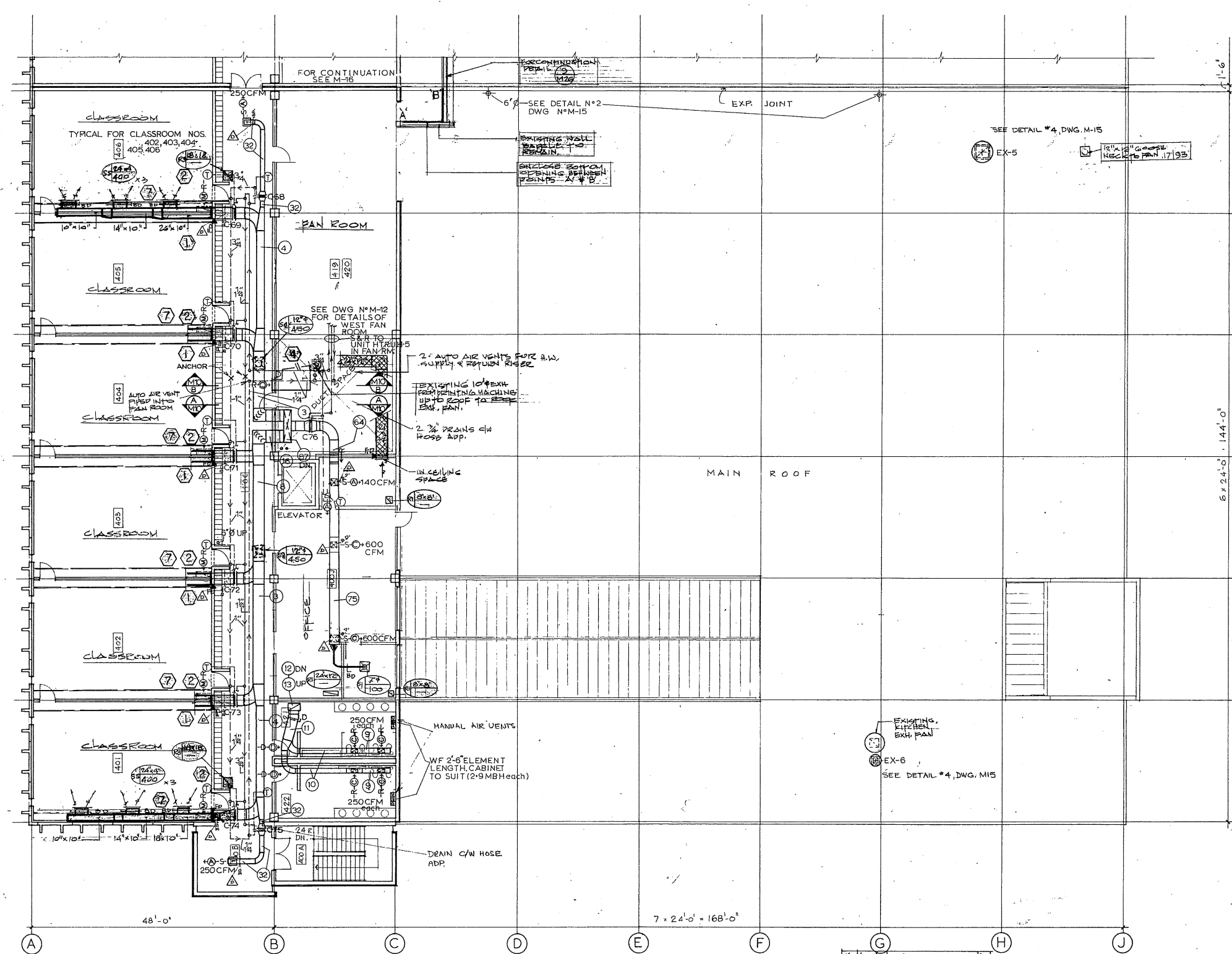
AS BUILT C JAN. 91 UPDATED RECORD DWGS. A B APR. 93 REPAIRED AS-BUILT DWGS. W/1 A MAY 77 SMOKE LINE C & 7-8 ONLY PIPE ANCHORS NOT INSTALLED		MULTI-DISCIPLINE COMPLEX, B.C.V.S. BURNABY, B.C. MECHANICAL FIRST FLOOR PLAN. EAST END. HEATING & VENTILATION. GOVERNMENT OF BRITISH COLUMBIA DEPARTMENT OF PUBLIC WORKS DRAWN E.T. DESIGNED R.M.T.C. CHECKED M.A. DATE SEPT. 14, 1973 INT. 4 OF 22	
SHEET REPRODUCTION SIZE SCALE TENTHS INCHES EIGHTHS		M-4	

NE01 1973-09 M4

200303

02-08-619588-M5

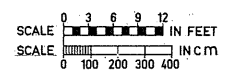
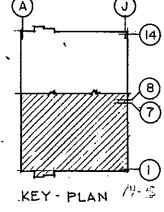
DUCT SIZE LEGEND		
NUMBER	METRIC SIZE	INCH SIZE
1	20 X 20cm	8 X 8
2	25 X 15cm	10 X 6
3	66 X 30cm	26 X 12
4	41 X 30cm	16 X 12
5	36 X 10cm	14 X 4
6	36 X 30cm	14 X 12
7	56 X 30cm	22 X 12
8	66 X 41cm	26 X 16
9	36 X 15cm	14 X 6
10	36 X 20cm	14 X 8
11	61 X 20cm	24 X 8
12	61 X 46cm	24 X 18
13	76 X 46cm	30 X 18
14	30 X 25cm	12 X 10
15	61 X 25cm	24 X 10
16	81 X 41cm	32 X 16
17	46 X 25cm	18 X 10
18	76 X 25cm	30 X 10
19	76 X 36cm	30 X 14
20	1.98 X 0.61m	78 X 24
21	56 X 41cm	22 X 16
22	56 X 51cm	22 X 20
23	41 X 25cm	16 X 10
24	51 X 25cm	20 X 10
25	1.22 X 0.46m	48 X 18
26	1.01 X 0.71m	40 X 28
27	86 X 46cm	34 X 18
28	66 X 46cm	26 X 18
29	66 X 36cm	26 X 14
30	10 X 30cm	12 X 12
31	51 X 30cm	20 X 12
32	30 X 15cm	12 X 6
33	36 X 25cm	14 X 10
34	51 X 46cm	20 X 18
35	56 X 46cm	22 X 18
36	56 X 20cm	22 X 8
37	71 X 46cm	28 X 18
38	91 X 51cm	36 X 20
39	51 X 36cm	20 X 14
40	71 X 36cm	28 X 14
41	46 X 61cm	18 X 24
42	46 X 51cm	18 X 20
43	51 X 51cm	20 X 20
44	1.48 X 0.71m	60 X 28
45	25 X 25cm	10 X 10
46	41 X 36cm	16 X 14
47	41 X 20cm	16 X 8
48	61 X 30cm	24 X 12
49	30 X 20cm	12 X 8
50	1.22 X 1.83m	48 X 72
51	2.44 X 0.50m	96 X 24
52	1.22 X 0.71m	48 X 28
53	86 X 71cm	34 X 28
54	1.27 X 0.56m	50 X 22
55	71 X 41cm	28 X 16
56	51 X 41cm	20 X 16
57	51 X 20cm	20 X 8
58	36 X 36cm	14 X 14
59	46 X 36cm	18 X 14
60	46 X 46cm	18 X 18
61	61 X 56cm	24 X 22
62	61 X 61cm	24 X 24
63	46 X 30cm	18 X 12
64	56 X 25cm	22 X 10
65	61 X 41cm	24 X 16
66	61 X 51cm	24 X 20
67	46 X 51cm	22 X 20
68	46 X 20cm	18 X 8
69	86 X 51cm	34 X 20
70	97 X 51cm	38 X 20
71	1.72 X 0.51m	68 X 20
72	1.98 X 0.71m	78 X 28
73	76 X 30cm	30 X 12
74	76 X 41cm	30 X 16
75	56 X 15cm	22 X 6
76	71 X 51cm	28 X 20
77	1.42 X 0.51m	56 X 20
78	71 X 25cm	28 X 10
79	71 X 20cm	28 X 8
80	71 X 61cm	28 X 24
81	46 X 15cm	18 X 6
82	1.05 X 0.51m	42 X 20
83	71 X 30cm	28 X 12
84	56 X 36cm	22 X 14
85	91 X 61cm	36 X 24
86	56 X 61cm	22 X 24
87	1.98 X 0.41m	78 X 16
88	71 X 71cm	28 X 28
89	25 X 20cm	10 X 8
90	1.78 X 0.51m	70 X 20
91	76 X 51cm	30 X 20
92	91 X 46cm	36 X 18
93	61 X 36cm	24 X 14
94	81 X 81cm	32 X 32
95	1.32 X 0.61m	52 X 24
96	1.47 X 0.61m	58 X 24
97	66 X 61cm	26 X 24
98	1.22 X 1.22m	48 X 48
99	2.13 X 0.61m	84 X 24
100	1.22 X 0.61m	48 X 24
101	1.01 X 0.46m	40 X 18



NOTES

- MAKE ALL PIPE RUN OUTS TO UNITS 24" EXCEPT WHERE NOTED.
- FOR PIPE AND DUCT SIZES IN DUCT SHAFT SEE DWG'S M-10 & M-15
- SEAL ALL AROUND DUCT RISERS AND INSTALL FIRE DAMPER AT FLOOR, TYPICAL FOR ALL EXH. DUCT RISERS PASSING THRU FLOOR. SEE ARCH. DWGS. SEE DWG. M-16 FOR ROOF PLAN DWG.

NEOL 1973-09 MS



REVISIONS B JAN 77 AS BUILT D JAN 91 UPDATED RECORD DWGS. C APR 03 UPDATED AS-BUILT DWG. A APR 06 CHANGES COMPLETED A MAR 77 AS BUILT DWG.		DESIGNER P. ENG. SENIOR MECH. ENGINEER		PROJECT MULTI-DISCIPLINE COMPLEX, B. C. V. S. BURNABY, B. C.		MECHANICAL 20-105	
SHEET REPRODUCTION SIZE SCALE 0 INCHES TENTHS EIGHTHS		DATE SEPT 14, 1973		HEATING & VENTILATION GOVERNMENT OF BRITISH COLUMBIA DEPARTMENT OF PUBLIC WORKS		M-5 5 of 22	

200304

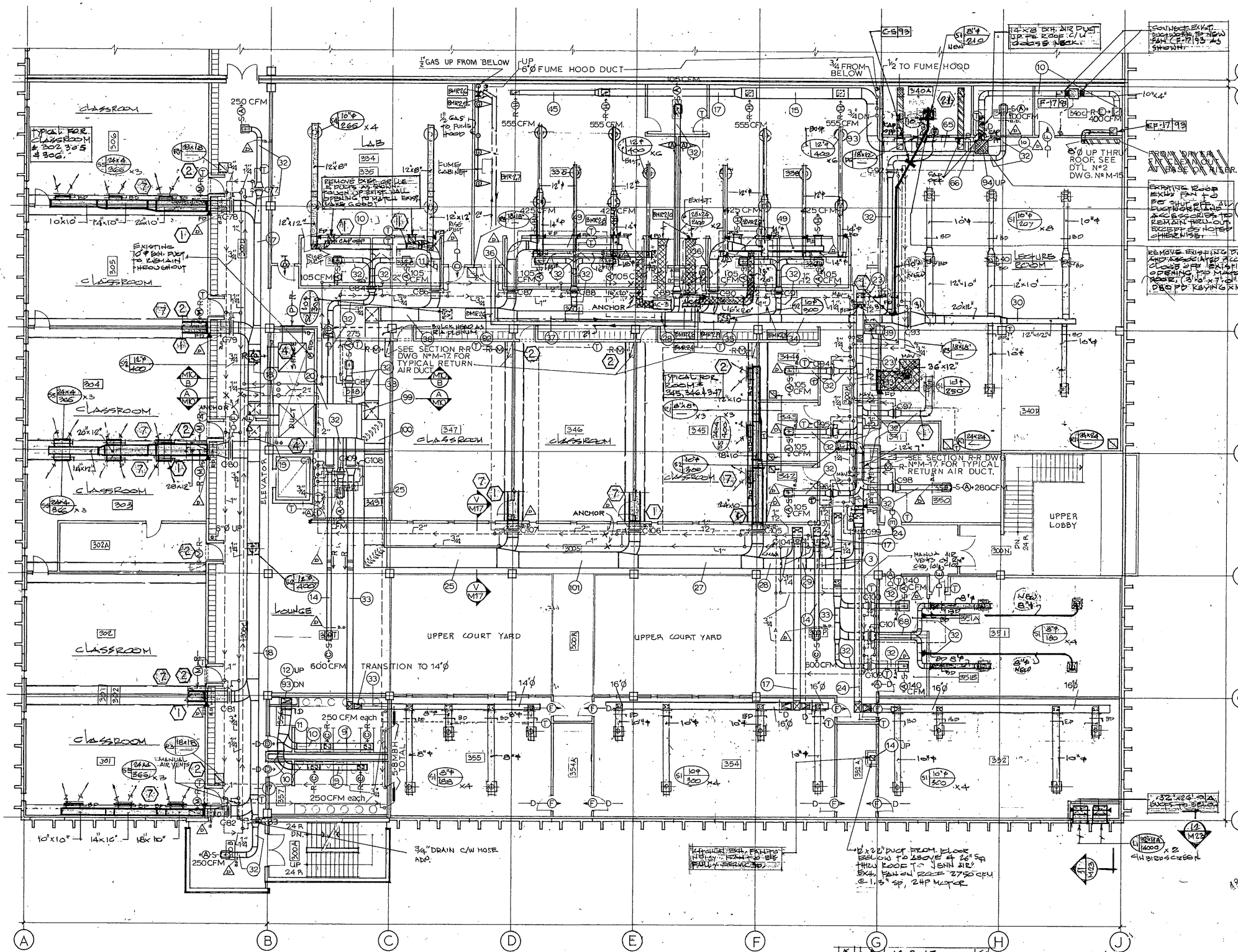
02-08-B-19588-M6

NE01 1973-09 M6

200305

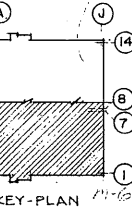
DUCT SIZE LEGEND

NUMBER	METRIC SIZE	INCH SIZE
1	20 X 20cm	8 X 8
2	25 X 15cm	10 X 6
3	36 X 30cm	14 X 12
4	41 X 30cm	16 X 12
5	36 X 10cm	14 X 4
6	36 X 30cm	14 X 12
7	56 X 30cm	22 X 12
8	66 X 41cm	26 X 16
9	36 X 15cm	14 X 6
10	36 X 20cm	14 X 8
11	61 X 20cm	24 X 8
12	61 X 16cm	24 X 6
13	76 X 46cm	30 X 18
14	30 X 15cm	12 X 6
15	61 X 25cm	24 X 10
16	81 X 41cm	32 X 16
17	46 X 25cm	18 X 10
18	76 X 25cm	30 X 10
19	76 X 36cm	30 X 14
20	1.98 X 0.61m	78 X 24
21	56 X 41cm	22 X 16
22	56 X 51cm	22 X 20
23	41 X 25cm	16 X 10
24	51 X 25cm	20 X 10
25	1.22 X 0.46m	48 X 18
26	1.01 X 0.71m	39 X 28
27	86 X 46cm	34 X 18
28	66 X 46cm	26 X 18
29	66 X 36cm	26 X 14
30	30 X 30cm	12 X 12
31	51 X 30cm	20 X 12
32	30 X 15cm	12 X 6
33	36 X 25cm	14 X 10
34	51 X 46cm	20 X 18
35	56 X 46cm	22 X 18
36	56 X 20cm	22 X 8
37	71 X 46cm	28 X 18
38	91 X 51cm	36 X 20
39	51 X 36cm	20 X 14
40	71 X 36cm	28 X 14
41	46 X 61cm	18 X 24
42	46 X 51cm	18 X 20
43	51 X 51cm	20 X 20
44	1.68 X 0.71m	66 X 28
45	25 X 25cm	10 X 10
46	41 X 36cm	16 X 14
47	41 X 20cm	16 X 8
48	61 X 30cm	24 X 12
49	30 X 30cm	12 X 12
50	1.22 X 18.3m	48 X 720
51	2.44 X 0.66m	96 X 24
52	1.22 X 0.71m	48 X 28
53	86 X 71cm	34 X 28
54	1.27 X 0.56m	50 X 22
55	71 X 41cm	28 X 16
56	51 X 41cm	20 X 16
57	51 X 30cm	20 X 8
58	36 X 36cm	14 X 14
59	46 X 36cm	18 X 14
60	46 X 46cm	18 X 18
61	61 X 66cm	24 X 22
62	61 X 61cm	24 X 24
63	46 X 46cm	18 X 18
64	56 X 25cm	22 X 10
65	61 X 41cm	24 X 16
66	61 X 31cm	24 X 12
67	66 X 51cm	26 X 20
68	46 X 20cm	18 X 8
69	86 X 51cm	34 X 20
70	97 X 51cm	38 X 20
71	1.72 X 0.51m	68 X 20
72	1.98 X 0.71m	78 X 28
73	76 X 30cm	30 X 12
74	76 X 41cm	30 X 16
75	56 X 15cm	22 X 6
76	71 X 51cm	28 X 20
77	1.42 X 0.51m	56 X 20
78	71 X 25cm	28 X 10
79	71 X 20cm	28 X 8
80	71 X 61cm	28 X 24
81	46 X 15cm	18 X 6
82	1.06 X 0.51m	42 X 20
83	71 X 30cm	28 X 12
84	56 X 36cm	22 X 14
85	91 X 61cm	36 X 24
86	56 X 61cm	22 X 24
87	1.98 X 0.41m	78 X 16
88	71 X 71cm	28 X 28
89	25 X 20cm	10 X 8
90	1.78 X 0.51m	70 X 20
91	76 X 51cm	30 X 20
92	61 X 46cm	24 X 18
93	61 X 36cm	24 X 14
94	61 X 61cm	24 X 24
95	1.32 X 0.61m	52 X 24
96	1.47 X 0.61m	58 X 24
97	66 X 61cm	26 X 24
98	1.22 X 1.22m	48 X 48
99	2.13 X 0.61m	84 X 24
100	1.22 X 0.61m	48 X 24
101	1.41 X 0.46m	40 X 18



NOTES

- MAKE ALL PIPE RUN OUTS TO COILS 3/4" EXCEPT WHERE NOTED.
- FOR PIPE AND DUCT SIZES IN DUCT SHED SEE DWG. NOS. M-15 & M-10.
- SEAL ALL AROUND DUCT RISERS AND INSTALL FIRE DAMPER AT FLOOR.
- TYPICAL FOR ALL EXH. DUCT RISERS PASSING THRU FLOOR. SEE ARCH. DWGS.



SCALE 0 3 6 9 12 IN FEET
SCALE 0 200 300 400 IN CM.

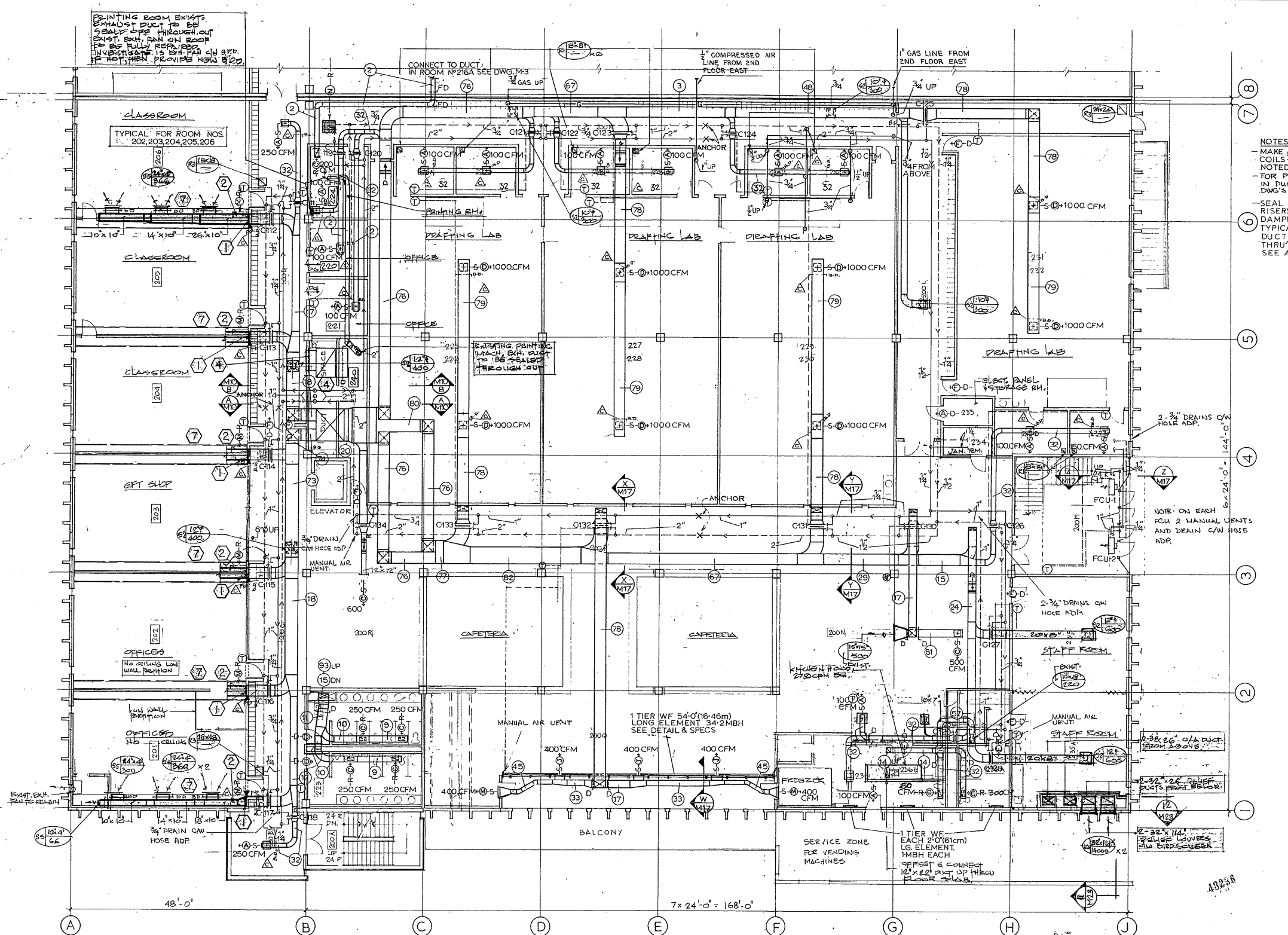
B. C. V. S. MULTI-DISCIPLINE COMPLEX, BURNABY, B.C.		MECHANICAL 20-105 M-6	
THIRD FLOOR PLAN WEST END		DRAWN BY: E.T. DESIGNED BY: R.A.M./T.O.L. CHECKED BY: [Signature] DATE: SEPT. 14/73	
REVISIONS SHEET REPRODUCTION SIZE SCALE: 0 INCHES TENTHS EIGHTHS		GOVERNMENT OF BRITISH COLUMBIA DEPARTMENT OF PUBLIC WORKS	

02-08-B19588-M7

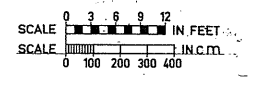
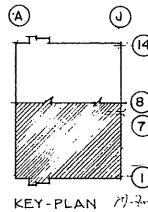
NE01 1973-09 M7

200306

DUCT SIZE LEGEND		
NUMBER	METRIC SIZE	INCH SIZE
1	20 X 20cm	8 X 8
2	25 X 25cm	10 X 10
3	30 X 30cm	12 X 12
4	35 X 35cm	14 X 14
5	40 X 40cm	16 X 16
6	45 X 45cm	18 X 18
7	50 X 50cm	20 X 20
8	55 X 55cm	22 X 22
9	60 X 60cm	24 X 24
10	65 X 65cm	26 X 26
11	70 X 70cm	28 X 28
12	75 X 75cm	30 X 30
13	80 X 80cm	32 X 32
14	85 X 85cm	34 X 34
15	90 X 90cm	36 X 36
16	95 X 95cm	38 X 38
17	100 X 100cm	40 X 40
18	105 X 105cm	42 X 42
19	110 X 110cm	44 X 44
20	115 X 115cm	46 X 46
21	120 X 120cm	48 X 48
22	125 X 125cm	50 X 50
23	130 X 130cm	52 X 52
24	135 X 135cm	54 X 54
25	140 X 140cm	56 X 56
26	145 X 145cm	58 X 58
27	150 X 150cm	60 X 60
28	155 X 155cm	62 X 62
29	160 X 160cm	64 X 64
30	165 X 165cm	66 X 66
31	170 X 170cm	68 X 68
32	175 X 175cm	70 X 70
33	180 X 180cm	72 X 72
34	185 X 185cm	74 X 74
35	190 X 190cm	76 X 76
36	195 X 195cm	78 X 78
37	200 X 200cm	80 X 80
38	205 X 205cm	82 X 82
39	210 X 210cm	84 X 84
40	215 X 215cm	86 X 86
41	220 X 220cm	88 X 88
42	225 X 225cm	90 X 90
43	230 X 230cm	92 X 92
44	235 X 235cm	94 X 94
45	240 X 240cm	96 X 96
46	245 X 245cm	98 X 98
47	250 X 250cm	100 X 100
48	255 X 255cm	102 X 102
49	260 X 260cm	104 X 104
50	265 X 265cm	106 X 106
51	270 X 270cm	108 X 108
52	275 X 275cm	110 X 110
53	280 X 280cm	112 X 112
54	285 X 285cm	114 X 114
55	290 X 290cm	116 X 116
56	295 X 295cm	118 X 118
57	300 X 300cm	120 X 120
58	305 X 305cm	122 X 122
59	310 X 310cm	124 X 124
60	315 X 315cm	126 X 126
61	320 X 320cm	128 X 128
62	325 X 325cm	130 X 130
63	330 X 330cm	132 X 132
64	335 X 335cm	134 X 134
65	340 X 340cm	136 X 136
66	345 X 345cm	138 X 138
67	350 X 350cm	140 X 140
68	355 X 355cm	142 X 142
69	360 X 360cm	144 X 144
70	365 X 365cm	146 X 146
71	370 X 370cm	148 X 148
72	375 X 375cm	150 X 150
73	380 X 380cm	152 X 152
74	385 X 385cm	154 X 154
75	390 X 390cm	156 X 156
76	395 X 395cm	158 X 158
77	400 X 400cm	160 X 160
78	405 X 405cm	162 X 162
79	410 X 410cm	164 X 164
80	415 X 415cm	166 X 166
81	420 X 420cm	168 X 168
82	425 X 425cm	170 X 170
83	430 X 430cm	172 X 172
84	435 X 435cm	174 X 174
85	440 X 440cm	176 X 176
86	445 X 445cm	178 X 178
87	450 X 450cm	180 X 180
88	455 X 455cm	182 X 182
89	460 X 460cm	184 X 184
90	465 X 465cm	186 X 186
91	470 X 470cm	188 X 188
92	475 X 475cm	190 X 190
93	480 X 480cm	192 X 192
94	485 X 485cm	194 X 194
95	490 X 490cm	196 X 196
96	495 X 495cm	198 X 198
97	500 X 500cm	200 X 200
98	505 X 505cm	202 X 202
99	510 X 510cm	204 X 204
100	515 X 515cm	206 X 206
101	520 X 520cm	208 X 208



NOTES
 - MAKE ALL PIPE RUN OUTS TO COILS 3/4" EXCEPT WHERE NOTED.
 - FOR PIPE AND DUCT SIZES IN DUCT SHAFT SEE DWG'S M10 & M15
 - SEAL ALL AROUND DUCT RISERS AND INSTALL FIRE DAMPER AT FLOOR. TYPICAL FOR ALL EXHAUST DUCT RISERS PASSING THRU FLOOR. SEE ARCH. DWGS.



MULTI-DISCIPLINE COMPLEX, B. C. V. S. SECOND FLOOR PLAN WEST END HEATING & VENTILATION		MECHANICAL 20-105 M-7
REVISIONS 1. JAN. 91 UPDATED RECORD DWGS. A 2. APR. 89 LATERAL RE-BUILT DWGS. WT 3. MAR. 77 AS BUILT DWGS. ET	DRAWN E. I. DESIGNED R. M. T. O. L. CHECKED M. J. S.	GOVERNMENT OF BRITISH COLUMBIA DEPARTMENT OF PUBLIC WORKS DATE SEPT 14, 1973

