

StreamLIT Land in Transition

BCIT's Centre for Ecological Restoration & Climate Adaption (CERCA) is a showcase project and will be the future home to many of BCIT's environmental programs. CERCA will promote a new generation of learning as it provides the students with opportunities to engage with the newly restored Guichon Creek. The meandering boardwalk allows the students and the public to interact with the proposed wetland and the riparian environment. An innovative, transparent lecture theatre elevates the traditional teaching methods as it bridges the connections between the indoor space and the creek. The building design is juxtaposed by two halves, where it is celebrated by the organic, undulating facade, and respected by the established industrial form.



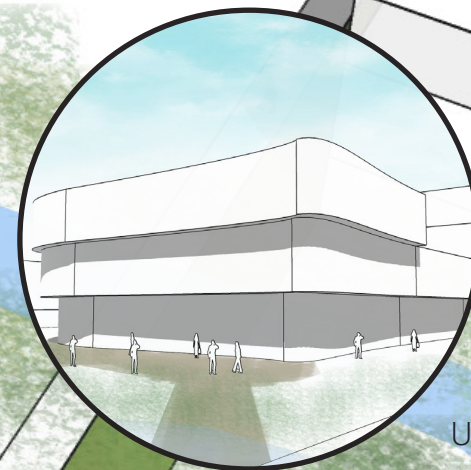
Creek Daylighting



Boardwalk



Interactive Theatre



Undulating Form

